
Curtain Holes in the Standing Architecture of Palenque

MICHAEL ANDERSON

This is a preliminary investigation into the occurrence and function of small architectural features which appear throughout the site of Palenque. Different people investigating the ruins at one time or another have referred to these features by different names. Holmes (1897:176) called them dumb-sheave cordholders; Maudslay (1889-1902, IV:15) referred to them as niches with stone staples, Tozzer (1913: 177-178) as tie-holes. Today, however, they are generally called curtain holes.

Were they really used for curtains? I have not tried to make any definitive statements concerning function at this time. I have tried only to account for the presence of all holes as they occur in the temples and Palace structures and to suggest possibilities based on their locations and associations with other architectural features.

Previous Accounts

In surveying the literature, I have found a paucity of detailed description concerning these features, by either early explorers or later archaeologists and other investigators. It is understandable that such early visitors as Walker and Caddy (Pendergast 1967), Stephens and Catherwood (Stephens 1841), and Charnay (1887) would have been more interested in the site as a whole, with its stunning edifices and artwork, and would have devoted all their energies to clearing, cleaning, and recording. However, in the course of these initial investigations, mention is made of the presence and possible function of some of the more obvious holes. Both the Caddy-Walker and Stephens-Catherwood expeditions apparently investigated the same area of the Palace, the Northeast Court. Both made mention of the large cylinder inserts found in House A. Says Caddy:

In the wall of each side of the centre doorway and within a few inches of the edge, both at top and bottom, there are semicylindrical holes cut in the stone having a strong bar down the middle of them; they appear to have acted as parts of rude hinges. (Pendergast 1967:126)

Stephens also describes these holes, as well as those found along the medial molding. He gives an interpretation of their function:

. . . our impression was, that an immense cotton cloth, running the whole length of the building, perhaps painted in a style corresponding with the ornaments, was attached to this cornice, and raised and lowered like a curtain, according to the exigencies of sun and rain. Such a curtain is used now in front of the piazzas of some haciendas in Yucatan. (1841, II:312)

Charnay goes further in his speculations, drawing comparisons with the central highlands of Mexico:

It may not be irrelevant to add that neither temples nor palaces were provided with doors, and that stuff or matting curtains were used for all apertures, indicated by the large and small rings fixed on the pilasters on each side of the entrances, and the whole length of the inner cornice. We know that neither the Toltecs nor Aztecs had doors to their houses, which seems to show great respect for property. (1887:252-253)

Even with the advent of more systematic investigations of the ruins, little more, if any, light was shed on these features; their presence was simply acknowledged. Maudslay (1889-1902, IV) again describes the House A holes and also includes brief descriptions of Houses C and E, the Temple of the Inscriptions, and the Temple of the Cross. Holmes (1897:151-209) also describes House A. He briefly notes the holes in each temple of the Cross Group as well and includes a drawing of a composite temple, showing more holes than actually exist. Seler remarks on the general traits of medial-molding holes found throughout the Palace. He also makes note of the capstone holes found in House B (1976:11, 47).

Hole Types

This investigation has brought to light two basic types of holes, which I define as any specially constructed feature through or around which a cord or rope could be passed and secured. Although the general usage of "curtain holes" is more prevalent today, perhaps "cordholder" is a better, more descriptive term. The two basic types are fairly consistently restricted to certain areas on the interior and exterior surfaces of temple and Palace structures, with very few exceptions.

I refer to one type as a simple biconically drilled hole. To make this type, two holes are drilled perpendicular to each other until they meet. The basic type is found exclusively on the edge of the medial molding (Fig. 1) and on the spring of the vault (Fig. 2). A variant of this hole type is found only in the capstone of the vault (Fig. 3). The sole exception is in House C, where a number of these holes appear on the underside of the medial molding. The hole is horseshoe-shaped, for two holes are drilled into the flat surface and then curved inward toward each other until they meet.

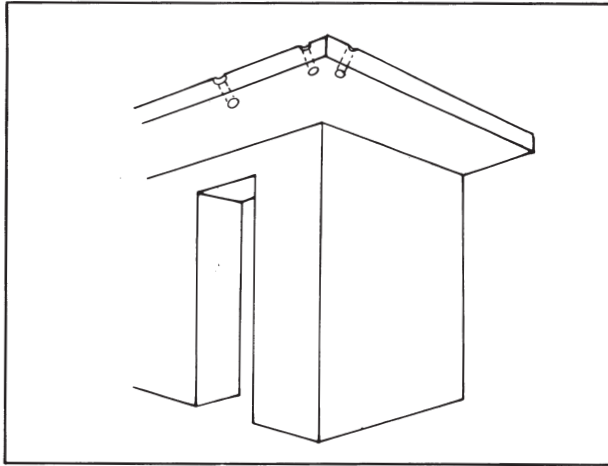


Fig. 1 Palenque. Holes of the medial molding.



Fig. 2 Palenque. Holes of the vault spring: (a) holes in the medial support wall, Temple of the Sun; (b) detail of holes, Temple of the Cross.

The second type of hole I refer to as the insertion type. Such holes are found on both interior and exterior surfaces: walls, façades, and piers. Very rarely do they occur in the upper zone, above the vault spring, and in only two instances, in Temple XIV, do they occur on substructures.

The insertion type has three variants. One I call the doughnut insert (Fig. 4). This variant appears as a rounded stone with flat sides, biconically drilled at or near the center. A niche is prepared in the wall or pier, and the stone is inserted and cemented in place, then

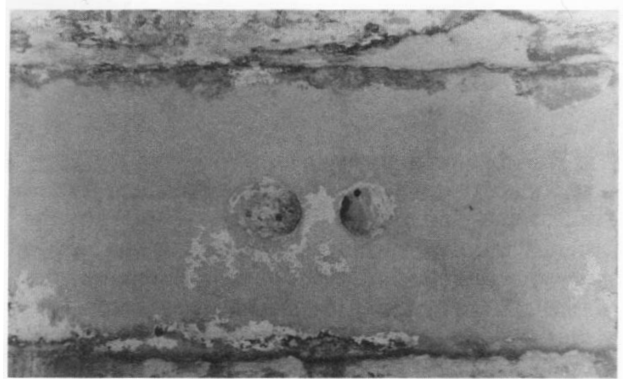


Fig. 3 House C, Palace, Palenque. Holes of the capstone.



Fig. 4 Temple of the Sun, Palace, Palenque. Doughnut insert.



Fig. 5 House A, Palace, Palenque. Doughnutoid insert.

plastered over, leaving a space for the cord or rope. It is difficult to tell whether the niche was made during construction or carved out after the building was finished. There is also a doughnutoid manifestation of this variant, where the hole is drilled nearer the edge of the insert (Fig. 5).

A second variant is the cylindrical insert (Fig. 6). This is the variant that has been referred to in the early accounts of the Palace. With this variant, a long, slender cylindrical stone is fitted into a prepared niche in the wall or pier. There is no drilled hole, but the space to either side of, and to the rear of, the insert allows for a cord or rope to be passed around and secured. Another manifestation of this variant is a relatively unshaped, but roughly rectangular, stone inserted in a similarly prepared niche (Fig. 7). The niche for both these manifestations was allowed for during construction, not added after the structure was completed.

The last variant of this type is found only in the Subterraneos. At present, I have no explanation for this. It resembles the cylindrical insert variant in that there is no hole per se; a space is created around the sides and back of the insert. But it does not appear to be an inserted piece. The hole seems to have been planned during construction, and a relatively flat, rectangular stone is placed across the opening (Fig. 8). The spanning stone is flush with the rest of the wall, whereas the other two variants either project from (doughnut) or are recessed into (cylindrical) the wall or pier.

drical) the wall or pier.

By my best count, there are 1,116 holes of all types found in the standing architecture of the ruins. The most numerous type is the simple biconically drilled type (602), followed by the doughnut-doughnutoid (466), cylindrical (40), and special Subterraneos (8) variants. As mentioned above, the simple biconically drilled holes are found exclusively in the medial molding, vault spring, and capstone. The three variants of the insertion type, with very few exceptions, are found on the lower zone interiors and exteriors. One major exception is House E, where 38 insert-type holes are found above the vault spring. They line up perfectly with holes found below the vault spring and have corresponding holes across the room on the opposite vault. The partition, whatever it was, appears to have extended from the floor to the capstone. The majority (319) of holes in the lower zone appear to be associated with doorways, regardless of variant. Ninety-seven examples are found on wall areas with correspondences across room spaces or with no apparent correspondences of any kind. Structures of the Palace, excepting the Tower and Houses A, AD, F, and I, show some exterior holes. These have no apparent correspondences or associations. It is possible that the holes were used in conjunction with other earlier structures, subsequently replaced as the Palace complex grew, or that they had some function related to those later structures.

Something that Table 1 does not show but that is interesting to note is the occurrence of a few patterns of general hole placement in certain of the temples. In my initial survey of the Cross Group, I noticed, after examining the Temple of the Sun, that certain areas of the Temples of the Cross and the Foliated Cross had holes in similar locations, though not necessarily similar types. The pattern observed was the following: holes present in the medial molding and vault spring of the medial support wall, one capstone hole in the central inner chamber above the shrine housing the tablets, two rows of holes on the backs of piers, holes flanking the entrance to the central chamber and inner shrine, and holes flanking the doorway entrances to inner side chambers. Certain features of the Temples of the Cross and the Foliated Cross

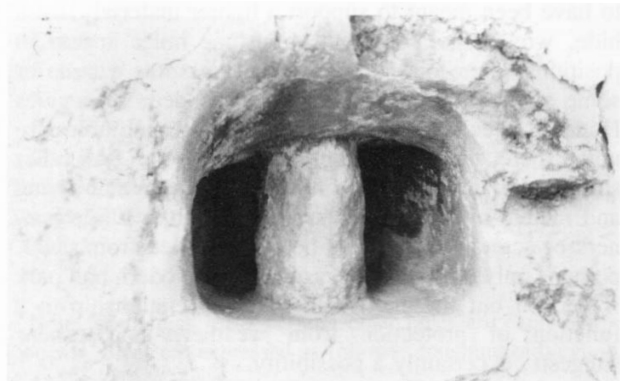


Fig. 6 House A, Palace, Palenque. Cylindrical insert.



Fig. 7 Temple V, North Group, Palenque. Cylinderlike insert.

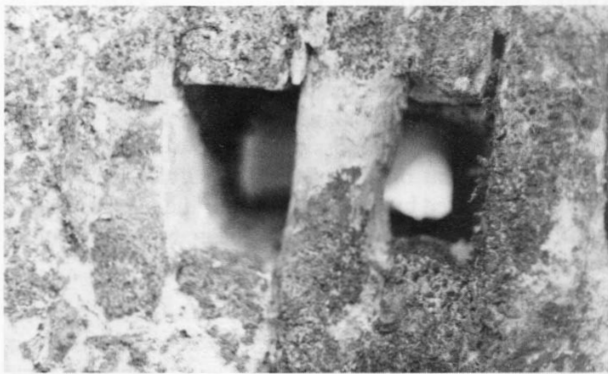


Fig. 8 Subterraneos, Palace, Palenque. Special Subterraneos type.

are missing – for example, piers – but the pattern seen in what remains makes me confident of a Cross Group pattern. “The TC, TFC, and TS almost certainly were designed and built as a single group” (Schele 1974a:8). If this is indeed the case, a Cross Group pattern of hole placement would make sense.

When looking at the Temple of the Inscriptions, one notices an almost Cross Group-like manifestation of hole locations. Holes are present in the medial molding, on pier backs, and on walls flanking entrances between piers and entrances to side and central inner chambers. The Temple of the Inscriptions, however, lacks an inner shrine; there are no capstone holes, and vault-spring holes exist only on the part of the medial support wall that faces the outer chamber. (Normally, in the Cross Group, holes in the vault spring are seen on both sides of the medial support wall.) Only the Cross Group and the Temple of the Inscriptions share these vault-spring holes. Schele states that “the last building attributable to Pacal is . . . the Temple of Inscriptions” (ibid.:7). But when one examines the other structures attributed to him, Houses E, B, and C (ibid.:4-6), the omission of similar holes in the vault springs is immediately noted. In fact, none of the other Palace structures manifests holes in this area, and the same is true for the remaining structures of the site. Might it be that these holes had some special purpose for the person who caused the construction of the structures they are in? We know that Chan-Bahlum built the Cross Group (ibid.:8) and that he also finished the Temple of the Inscriptions (Greene Robertson 1979a: 131-132). Might not he have embellished the monuments of his father, Pacal, and himself with a special set of features for which he had a particular design or purpose? This, of course, is all in the realm of speculation, but it is the pattern that is seen.

Another apparent pattern, which can be only partially determined at this time, is shared by El Olvidado and the Conde. Although El Olvidado has undergone some recent damage – a partially collapsed roof – and appears to be half-filled with debris, it is possible to make the following observations. On the medial molding, both structures exhibit a similar size of hole, in this case, of a much smaller diameter than those seen elsewhere at the site. The interiors of both structures also exhibit a similar placement pattern. In both, pier backs have holes placed toward the center rather than toward the edges, as in the Cross Group or Palace structures. Also, the jambs of entrances into the interior chamber or chambers of El Olvidado exhibit flanking sets of holes, as noted in the Conde. (It is impossible to know just how many holes are present on the piers in El Olvidado, because they are obscured by debris.) Whether the other architectural features of the two structures bear any resemblances to each other is uncertain at present.

Function

What were the holes used for? The general consensus of all who have come to Palenque and those who have noted similar features elsewhere in the Maya area seems to be that they were used for curtains or hangings. Totten

says, “No doors are known but there are holes in many jambs suggesting the use of curtains” (1926:34). As mentioned above, Stephens, Caddy, and Charnay have speculated on a curtain-related function. We also have the ethnographic account of Clavigero (in Tozzer 1941:86), which notes the Aztec use of doorway curtains.

Certainly, the location of holes suggests something functional. A large number of holes are associated with doorways and would seem to suggest some sort of covering across that space, either to block one’s view into the interior or to prohibit entrance by unauthorized persons. The type or type variant of hole may suggest usage differentiation. The cylindrical insert variant is quite large in most cases and appears to have been meant to bear a great load, perhaps a wooden barrier of some sort. These holes are found only in a few strategic areas. In House A, they flank the only direct passageway between the outside of the Palace and the Eastern Court. In the Temple of the Inscriptions, they flank the entrance to the central inner chamber, where the passageway to Pacal’s tomb was found. In the Cross Group, they flank the entrance to the central inner chamber and the entrance to the inner shrine and tablets. Of interest is the fact that this hole variant is seen on the back of the remaining pier of the Temple of the Cross. In each case, these holes appear intended to help protect something or some place from unwanted intrusions.

The doughnut-doughnutoid variants do not appear to be as sturdy as the cylindrical insert variant; they seem to have been meant to support a lighter material, like a hide, woven mat, or cloth. Capstone holes appear in positions where one would logically assume a lamp or some sort of illumination to be suspended. This gives House B special significance, for twenty such holes are noted there, usually three or more to a room. All other structures with such holes have only one. Vault-spring and medial-molding holes are questionable. Large banners or screens could have been suspended from them, perhaps only on special occasions, as a modern ball park is decked out for the World Series. Relationship to a function of protection from weather, as Stephens suggests, is certainly a possibility.

One possible clue to function is provided by the Codex Madrid, which exhibits templelike structures with a figure seated inside (Fig. 9). Above the figure’s head appears a fringe of some sort, which hangs down from the underside of what looks to be either a roof or a cornice. This fringe does not hang down all the way to the floor but, rather, as far as the head of the seated figure. The fringe appears to have been made from different types of material; in one version it is seen as a series of single straight or curved fibers with a dotted border along the edge of the material, and in the other it appears to be a woven mat or cloth, again ending with the dotted border. Exactly what this represents is unknown; it would appear, however, that it is some sort of hanging.

Another possible function is the support of poles carrying banners or torches. Only three holes that could have functioned in this way are evident. One is in the right inner side chamber of the Temple of the Sun. The

Locations, Concentrations, and Patterns

Table 1 shows the location of all occurrences of holes. The categories of positions are medial molding, capstone, vault spring (only on the medial support wall), wall (not

related to doorways), pier, doorway (not including piers), exterior surface (not including doorways), and other, a catchall category to note exceptions to general trends.

Table 1 *Curtain Hole Index*

Location	Medial Molding	Capstone	Vault Spring	Wall	Pier	Exteriors	Doorway	Other
Cross Group								
Temple of the Sun	72	1	21	7	12		12/10	1
Temple of the Cross	47	1	41	7	6a	1	6/9	
Temple of the Foliated Cross	50	1	33	14			13/3	
Temple XIV								2b
Palace								
House A	4	1		2	6		6a	
House B	40	20		9		2	18	
House C	18	1		13		1	6	8c
House D	10			5		7	9	
House AD							2	
House E	19	1		17		32	38	45
House F	13			4				
House G				3		1	7	
House H	7	1		9		2	24	2d
House I								
Subterráneos				5		1	19	8e
Tower							6	1
Temple of the Inscriptions	72		28		21		16/6	
North Group								
Conde	27			2	4		10	
Temple V							9	
Temple IV								
Temple III							4	
Temple II	12				4		14	
Temple of the Lion	12						2	
Temple XII	35				2			
Olvidado	6				2		4	

Note: Wall, pier, exterior, and other holes are expressed in the doughnut or doughnutoid variant, except where noted. Doorway holes are expressed as follows: doughnut(oid)/cylindrical.

- a. Cylindrical insert.
- b. Found on substructure.
- c. Capstonelike holes found on medial molding.
- d. Found in area above vault spring.
- e. Special Subterráneos variant.

other two are on the substructure of Temple XIV, flanking the staircase. In all cases, the stone projects almost completely from the wall so that the hole is easily accessible.

Holes are also seen in association with benches, although this is not a strong association, and the correspondences are absent in several cases. It does appear, however, that some sort of partition may have been set up to create a private space for the occupant of the bench. Whether these benches were for sleeping or for mortuary purposes is debatable; they probably served both functions at one time or another. Whatever the purpose, it seems that some degree of privacy was sought. Harrison (1970:176-181) discusses associations of “sub-spring beam holes” and benches in the Central Acropolis of Tikal.

A hint as to function is seen in M. D. Coe’s *Lords of the Underworld* (1978). Two decorated ceramic vessels, numbers 1 and 2, from the Calakmul area, are executed in the “codex style”. Both portray a seated figure upon a bench. Above the figure’s head is a curtain of some kind, rolled up and knotted to keep it in place. These

curtains appear without decoration, except for a border along the edge of the material.

One factor that inhibits confident interpretation is the amount of damage to the structures and the amount of subsequent reconstruction. In many instances, damage to part of a building has removed evidence of possible hole correspondences. In the North Group especially heavy coats of lime melt have covered wall and pier surfaces, probably hiding some hole correspondences. Reconstruction also appears to affect the presence of holes. It seems that, where salvage or reconstruction work has occurred, holes are absent. The best example of this is the Temple of the Sun. In the outer chamber along the pier backs and walls which define the entrance ways, there are six rows of holes, three to a row. Only in the first row, to the left as one looks toward the Temple of the Foliated Cross, is this pattern interrupted; the top hole is missing, and one can discern evidence of reconstruction in that area. Only the repeated pattern of three holes per row makes one confident of assuming that a hole is missing.

Reconstruction can also create associations that do not exist. Behind the Temple of the Cross, in the base upon which the temple sits, there are two holes drilled into the top of the stone. At first, I thought that this was a perfect correspondence with the holes in the medial molding, providing places to secure a banner or curtain from top and bottom. But, such holes were not found anywhere else at the same position, on any other building that had medial-molding holes. It was later pointed out to me, and I confirmed this by closer inspection, that this section had been reconstructed and that the slab used to complete the work had been part of a medial molding at one time. However, there is also evidence of more careful reconstruction and attention to detail. In House D, a restored section of the medial molding along the southwest corner has holes drilled into the concrete material, in imitation of the prevalent pattern. These holes were not included in the count in this essay.

Palenque and Other Sites

How does Palenque compare with other sites of the central Maya area?

Harrison (1970:174-175), reporting on the Central Acropolis of Tikal, found that “the apertures that served as curtain holders on the interior sides of doorways, on the wall near the doorjamb above the floor and below the lintel, were noted in every exterior doorway of the Central Acropolis.” This description conforms with what is observed at Palenque. Harrison observed three types of insertions: a “masonry rod” in Early Classic structures, bone or wooden rods during the Late Classic, and a “ceramic insert,” apparently a later introduction during the Late Classic. At Palenque, only stone inserts are present.

Harrison concludes his discussion of the holes with the idea that their primary function was to insure privacy and that they were ill suited for protection against weather or the actual intrusion of animals, insects, or people. At Palenque, I feel that the cylindrical inserts were con-

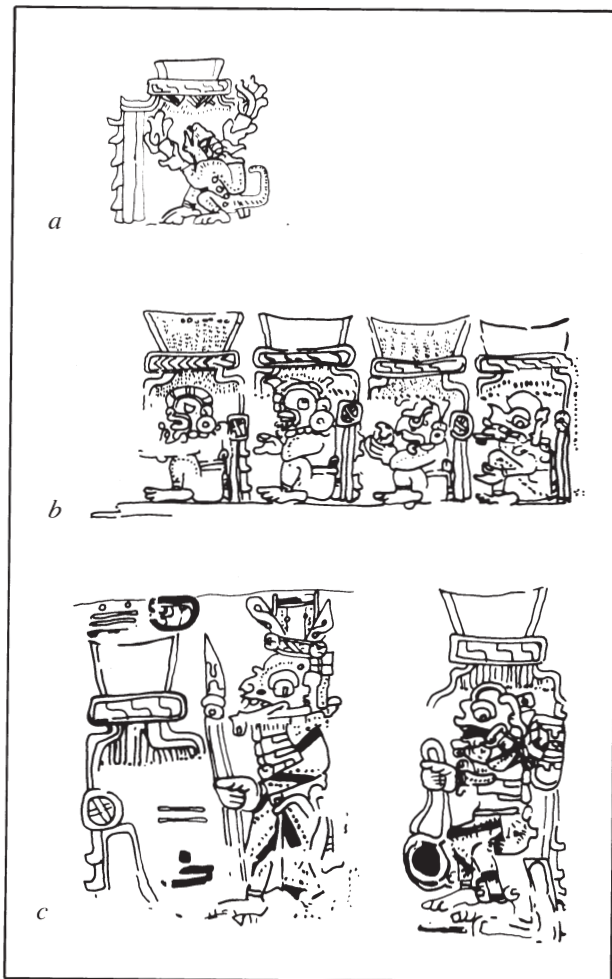


Fig. 9 Codex Madrid: (a) page 63, fringe above seated figure’s head; (b) page 87, single straight or curved fibers; (c) page 90, woven material.

structed and situated in such a manner as to prohibit unwanted human access.

In the Ruppert, Thompson, and Proskouriakoff report on Bonampak, Ruppert, in the architecture section, noticed holes on exterior façades of several structures. Most holes noted were located beneath the moldings of the structures and did not appear associated with doorways. The East Chamber of Structure 1 was described as having a “dumb sheave placed at either side of doorway at top and bottom” (1955:17). One interesting manifestation of what he designated a cordholder was noted on Structure 5: “One in form of stucco face appears in center of east wall directly below molding. Cord passed through eye sockets” (ibid.:20).

In a preliminary investigation of Nakum, Guatemala, Tozzer (1913:177-178) found only one example of a “tie-hole,” which he described as having a wooden insert. In reporting on San José, Belize, J. E. S. Thompson (1939a: 27) noted thirteen “curtain sash holders or tie holes,” which seemed similar to the Nakum example “except that all rods at San José were of bone.”

This brief survey is by no means complete or comprehensive, but I hope it points out that such holes, regardless of construction type or material used, were widespread throughout the central Maya area. Pollock (1965: 405-406) noted them in the Puuc area, and Totten (1926: 34) makes mention of them in general terms for the whole

Maya area. Is this a Mesoamerica-wide trait? Certainly Clavigero (in Tozzer 1941:86) saw a sort of curtain being used in Mexico. Other Mesoamerican groups must await further investigation.

Conclusion

I think it is safe to say that the need for privacy is a feature in every person’s life. There are times when we all need to retreat to our own little place, for whatever purpose. Religion has also made use of the need for privacy. Privacy helps heighten and impart a sense of mystery to rites and rituals. It helps maintain the distinctions that set apart priest and peasant. Curtain holes, tie-holes, stone staples, cordholders, or whatever probably played a tiny role in the functioning and maintenance of a great society and civilization.

Acknowledgments

I would like to thank Merle Greene Robertson, whose guidance and assistance during the course of my research made this paper possible.

Note

The illustrations in this essay, with the exception of Figs. 1 and 9, are by the author. Figs. 1 and 9 are by Merle Greene Robertson.

Bibliography

- ABASCAL, RAFAEL, PATRICIO DÁVILA, PETER SCHMIDT, and DIANA Z. DE DÁVILA
1976 La arqueología del sur-oeste de Tlaxcala (primera parte). *Comunicaciones: Proyecto Puebla-Tlaxcala*, supp. 2. Puebla: Fundación Alemana para la Investigación Científica.
- ABASCAL, RAFAEL, GARMAN HARBOTTLE, and EDWARD V. SAYRE
1974 "Correlations between Terra Cotta Figurines from the Valley of Mexico and Source Clays by Activation Analysis." In *Archaeological Chemistry*: 81-99. Edited by C. W. Beck. Washington: American Chemical Society.
- ACOSTA SAIGNES, MIGUEL
1945 Los Pochteca. *Acta Athropológica* 1(1). Mexico.
- ADAMS, RICHARD E. W.
1963 "A Polychrome Vessel from Altar de Sacrificios." *Archaeology* 16(2):90-92.
1971 The Ceramics of Altar de Sacrificios. *Harvard University, Papers of the Peabody Museum of Archaeology and Ethnology* 63(1).
1978 "Routes of Communication in Mesoamerica: The Northern Guatemalan Highlands and the Peten." *Papers of the New World Archaeological Foundation* 40:27-35.
- ADAMS, RICHARD E. W., and T. PATRICK CULBERT
1977 "The Origins of Civilization in the Maya Lowlands." In *The Origins of Maya Civilization*: 3-24. Edited by Richard E. W. Adams. Albuquerque: University of New Mexico Press.
- ALVARADO TEZOMOC, HERNANDO
1878 *Crónica mexicana escrita hacia el año de 1598*. Mexico.
- ANALES DE CUAUHTITLÁN
1945 In *Códice Chimalpopoca: Anales de Cuauhtitlán y leyenda de los soles*. *Universidad Nacional Autónoma de México, Publicación del Instituto de Historia, primera serie* 1.
- ANCIENT MAYA PAINTINGS OF BONAMPAK, MEXICO
1955 *Carnegie Institution of Washington Supplementary Publication* 46.
- ANDERSON, A. HAMILTON
1958 "Recent Discoveries at Caracol Site, British Honduras." In *Proceedings of the Thirty-second International Congress of Americanists* (1956): 494-499. Copenhagen.
- 1959 "More Discoveries at Caracol, British Honduras." In *Actas del XXXIIIº Congreso de Americanistas* (1958): 211-218. San José.
- ANDERSON, A. HAMILTON, and HERBERT J. COOK
1944 Archaeological Finds near Douglas, British Honduras. *Carnegie Institution of Washington, Notes on Middle American Archaeology and Ethnology* 2(40): 83-92.
- ANDREWS, E. WYLLYS, IV
1965a "Archaeology and Prehistory in the Northern Maya Lowlands: An Introduction." In *Handbook of Middle American Indians* 2(1):288-330. General editor, Robert Wauchope. Austin: University of Texas Press.
1965b "Exploration in the Gruta de Chac, Yucatan, Mexico." *Tulane University, Middle American Research Institute Publication* 31:1-21.
1970 Balankanche, Throne of the Tiger Priest. *Tulane University, Middle American Research Institute Publication* 32.
- ANTON, FERDINAND
1970 *Art of the Maya*. New York.
1973 *La mujer en la América antigua*. Mexico.
- ARA, DOMINGO DE
1616 *Bocabulario de lengua Tzeldal, según el orden de Copanabaztla*. Edited by Fray Alonzo de Guzman. Photocopy of MS, Newberry Library.
- ARROYO, ESTEBAN
1961 *Los Dominicos, forjadores de la civilización oajaqueña*. Oaxaca.
- ATTINASI, JOHN J.
1973 "Lak T'an: A Grammar of the Chol (Mayan) Word." Ph.D. dissertation, University of Chicago. Ann Arbor: University Microfilms International.
- AULIE, H. WILBUR, and EVELYN W. DE AULIE
1978 *Diccionario ch'ol-español, español-chol. Serie de Vocabularios y Diccionarios Indígenas Mariano Silva y Aceves* 21. Mexico: Instituto Lingüístico de Verano.
- AVELEYRA ARROYO DE ANDA, LUIS
1964 *Obras selectas del arte prehispánico (adquisiciones recientes)*. Mexico: Consejo para la Planación e Instalación del Museo Nacional de Antropología.
- AVENI, ANTHONY F., and HORST HARTUNG
1979 "Some Suggestions about the Arrangement of Buildings at Palenque." In *Tercera Mesa Redonda de Palenque* 4:173-177. Edited by Merle Greene Robertson and Donnan Call Jeffers. Monterey, Calif.: Pre-Columbian Art Research Center.

- BAILEY, JOYCE WADDELL
1972 "A Preliminary Investigation of the Formal and Interpretative Histories of Monumental Relief Sculpture from Tikal, Guatemala: Pre-, Early and Middle Classic Periods." Ph.D. dissertation, Yale University. Ann Arbor: University Microfilms International.
- BARDAWIL, LAWRENCE W.
1976 "The Principal Bird Deity in Maya Art – An Iconographic Study of Form and Meaning." In *The Art, Iconography & Dynastic History of Palenque, Part 3: Proceedings of the Segunda Mesa Redonda de Palenque: 195-209*. Edited by Merle Greene Robertson. Pebble Beach: Robert Louis Stevenson School.
- BARRERA RUBIO, ALFREDO
1978 Field notes, Uxmal, Yucatán.
1979 "Patrón de asentamiento en el área de Uxmal, Yucatán, México." Paper presented at the XVI^o Mesa Redonda de la Sociedad Mexicana de Antropología, Saltillo, Coahuila.
1980 Field notes, Puuc sites, Yucatán.
- BARRERA VÁSQUEZ, ALFREDO
1948 *El libro de los libros de Chilam Balam*. Mexico and Buenos Aires: Fondo de Cultura Económica.
1980 *Diccionario maya cordemex: maya-español, español-maya*. Mérida.
- BARRERA VÁSQUEZ, ALFREDO, and SILVANUS GRISWOLD MORLEY
1949 "The Maya Chronicles." *Carnegie Institution of Washington Contributions to American Archaeology and History* 10(48).
- BARRERA VÁSQUEZ, ALFREDO, and SILVIA RENDÓN
1972 *El libro de los libros de Chilam Balam*. 3rd printing, Mexico.
- BARRY, IRIS
1975 "Investigation of Structure 277 at Nohmul." In *Archaeology in Northern Belize: British Museum-Cambridge University Corozal Project 1974-75 Interim Report: 109-115*. Edited by Norman Hammond. Cambridge: Centre of Latin American Studies.
- BARTHEL, THOMAS S.
1954 "Maya Epigraphy: Some Remarks on the Affix 'al.'" In *Proceedings of the Thirtieth International Congress of Americanists (1952): 45-49*. London.
1963 "Die Stele 31 von Tikal." *Tribus* 12:159-214.
1964 Comentarios a las inscripciones clásicas tardías de Chichén Itzá." *Estudios de Cultura Maya* 4:223-244.
1966 "Mesoamerikanische Fledermausdämonen." *Tribus* 15:101-124.
1968 "El complejo 'emblema.'" *Estudios de Cultura Maya* 7:159-193.
1974 "Neue Lesungen zur Mayaschrift." *Tribus* 23:175-211.
1977a "A Tuebingen Key to Maya Glyphs." *Tribus* 26:97-102.
1977b "Untersuchungen zur grossen Göttin der Maya." *Zeitschrift für Ethnologie* 102:44-102.
- BASSETA, DOMINGO DE
n.d. *Vocabulario quiché*. Paris: Bibliothèque Nationale.
- BECQUELIN, PIERRE, and CLAUDE F. BAUDEZ.
1982 Tonina: Une cité maya du Chiapas (Mexique). *Études Mésoaméricaines* 6(2). Mexico: Mission Archéologique et Ethnologique Française au Mexique.
- BEETZ, CARL P., and LINTON SATTERTHWAITHE
1981 The Monuments and Inscriptions of Caracol, Belize. *University Museum Monograph* 45. Philadelphia: University of Pennsylvania.
- BENSON, ELIZABETH P.
1974 "Gestures and Offerings." In *Primera Mesa Redonda de Palenque, Part 1: 109-120*. Edited by Merle Greene Robertson. Pebble Beach: Robert Louis Stevenson School.
1982 "Symbolic Objects in Maya Art." *Mexicon* 4(3):45-47. Berlin.
- BERLIN, BRENT, and TERRENCE KAUFMAN
1962 Diccionario del tzeltal de Tenejapa, Chiapas. Unpublished MS on file in the Department of Anthropology, Yale University.
- BERLIN, HEINRICH
1944 "Un templo olvidado en Palenque." *Revista Mexicana de Estudios Antropológicos* 6:62-90.
1958 "El glifo 'emblema' en las inscripciones mayas." *Journal de la Société des Américanistes* n.s.47:111-119. Paris.
1959 "Glifos nominales en el sarcófago de Palenque." *Humanidades* 2(10):1-8. Guatemala: Universidad de San Carlos.
1963 "The Palenque Triad." *Journal de la Société des Américanistes* n.s. 52:91-99. Paris.
1965a "The Inscription of the Temple of the Cross at Palenque." *American Antiquity* 30(3):330-342.
1965b "Neue Funde zu alten Zeichnungen." *Ethnos* 30:136-143.
1968 "Estudios epigráficos II." *Antropología e Historia de Guatemala* 20:13-24.
1970a "Miscelánea palencana." *Journal de la Société des Américanistes* n.s. 59:107-128. Paris.
1970b "The Tablet of the 96 Glyphs at Palenque, Chiapas, Mexico." *Tulane University, Middle American Research Institute Publication* 26:135-149.
1973 "Contributions to the Understanding of the Inscriptions at Naranjo." Typescript translated by Christopher Jones from German; original in *Bulletin de la Société Suisse des Américanistes* 37:7-15. Geneva.
1977 *Signos y significados en las inscripciones mayas*. Ministerio de Educación, Instituto Nacional del Patrimonio Cultural de Guatemala.
- BERNAL, IGNACIO
1969a *The Olmec World*. Berkeley: University of California Press.
1969b *100 Great Masterpieces of the Mexican National Museum of Anthropology*. New York.
- BEYER, HERMANN
1928 "El origen del jeroglífico maya akbal." *Revista Mexicana de Estudios Históricos* 2:5-9.
1930 "A Deity Common to Teotihuacan and Totonac Cultures." In *Proceedings of the Twenty-third International Congress of Americanists (1928): 82-84*. New York.
1937 "Studies on the Inscriptions of Chichen Itza." *Carnegie Institution of Washington Publication* 483, *Contributions to American Archaeology* 4(21):29-175.
- BISHOP, RONALD L.
1975 "Western Lowland Maya Ceramic Trade: An Archaeological Application of Nuclear Chemical and Geological Data Analysis." Ph.D. dissertation, Southern Illinois University, Carbondale. Ann Arbor: University Microfilms International.
1980 "Aspects of Ceramic Compositional Modeling." In *Models and Methods in Regional Exchange, Society*

- for *American Archaeology Papers* 1:47-66. Edited by R. E. Fry. Washington.
- BISHOP, RONALD L., MARILYN P. BEAUDRY, RICHARD M. LEVENTHAL, and ROBERT J. SHARER
1980 "Compositional Analysis of Classic Period Painted Ceramics in the Southeast Maya Area." Paper presented at the Forty-fifth Annual Meeting of the Society for American Archaeology, Philadelphia.
- BISHOP, RONALD L., GARMAN HARBOTTLE, and EDWARD V. SAYRE
1979 "Characterization of Jades and Accompanying Rocks through Neutron Activation." Paper presented at the annual meeting on Archaeometry and Archaeological Prospection, London.
- BISHOP, RONALD L., GARMAN HARBOTTLE, and EDWARD V. SAYRE
1982 "Chemical and Mathematical Procedures Employed in the Mayan Fine Paste Ceramics Project." In *Analyses of Fine Paste Ceramics, Excavations at Seibal, Guatemala*. Edited by Jeremy A. Sabloff. *Harvard University, Memoirs of the Peabody Museum of Archaeology and Ethnology* 15(2).
- BISHOP, RONALD L., GARMAN HARBOTTLE, EDWARD V. SAYRE, and LAMBERTUS VAN ZELST
1980 "Analytical Study of Mesoamerican Jade Artifacts and Sources." Paper presented at the annual meeting on Archaeometry and Archaeological Prospection, Paris.
- BISHOP, RONALD L., and ROBERT L. RANDS
1982 "Mayan Fine Paste Ceramics: A Compositional Perspective." In *Analyses of Fine Paste Ceramics, Excavations at Seibal, Guatemala*. Edited by Jeremy A. Sabloff. *Harvard University, Memoirs of the Peabody Museum of Archaeology and Ethnology* 15(2).
- BITTMAN, BENTE, and THELMA D. SULLIVAN
1978 "The Pochteca." *Papers of the New World Archaeological Foundation* 40:211-218.
- BLANTON, RICHARD E.
1978 *Monte Alban: Settlement Patterns at the Ancient Zapotec Capital*. New York.
- BLOM, FRANS
1934 "Short Summary of Recent Explorations in the Ruins of Uxmal, Yucatan." In *Proceedings of the Twenty-fourth International Congress of Americanists* (1930): 55-59. Hamburg.
- BLOM, FRANS, and OLIVER LAFARGE
1926 *Tribes and Temples: A Record of the Expedition to Middle America Conducted by the Tulane University of Louisiana in 1925*. 2 vols. New Orleans: Tulane University.
- BOGGS, STANLEY H.
1973 "Pre-Maya Costumes and Coiffures." *Américas* 25(2):19-24.
- BOLLES, JOHN
1977 *Las Monjas: A Major Pre-Mexican Architectural Complex at Chichen Itza*. Norman: University of Oklahoma Press.
- BOWDITCH, CHARLES
1910 *The Numeration, Calendar Systems and Astronomical Knowledge of the Mayas*. Cambridge, Mass.
- BRASSEUR DE BOURBOURG, C. E.
1961 *Gramatica de la lengua quiche (vocabulario)*. Guatemala.
- BRICKER, VICTORIA R.
1977 "Pronominal Inflection in the Mayan Languages." *Tulane University, Middle American Research Institute Occasional Paper* 1.
- 1981 "The Source of the Ergative Split in Yucatec Maya." *Journal of Mayan Linguistics* 2(2). Iowa City.
- BRINTON, DANIEL G.
1882 *The Maya Chronicles*. Philadelphia.
- BRUCE, ROBERT D.
1968 *Gramática del Lacandón. Instituto Nacional de Antropología e Historia, Departamento de Investigaciones Antropológicas Publicaciones* 21. Mexico.
- 1979 *Lacandon Dream Symbolism*. Vol. 2. Mexico.
- BURGOA, FRAY FRANCISCO DE
1934 *Geográfica descripción de la parte septentrional y sitio astronómico de Mexico*.
- CAMPBELL, LYLE RICHARD
1971 "Historical Linguistics and Quichean Linguistic Prehistory." Ph.D. dissertation, University of California at Los Angeles. Ann Arbor: University Microfilms International.
- CAMPBELL, LYLE RICHARD, and TERRENCE S. KAUFMAN
1976 "A Linguistic Look at the Olmecs." *American Antiquity* 41(1):80-89.
- CARLSON, JOHN B.
1981 "Olmec Concave Iron-Ore Mirrors: The Aesthetics of a Lithic Technology and the Lord of the Mirror." In *The Olmec and Their Neighbors: Essays in Memory of Matthew P. Stirling*: 117-147. Edited by Elizabeth P. Benson. Washington: Dumbarton Oaks Research Library and Collections.
- CARMACK, ROBERT M.
1973 *Quichean Civilization: The Ethnohistoric, Ethnographic, and Archaeological Sources*. Berkeley; University of California Press.
- CARRILLO, FRAY ESTANISLAO
1846 "La exploración de un subterráneo." *El Registro Yucateco* 4:229-230. Mérida: Imprenta de Castillo.
- CASTILLO FARRERAS, VICTOR M.
1969 "Caminos del mundo náhuatl." *Estudios de Cultura Náhuatl* 8:175-187. Mexico: Universidad Nacional Autónoma de México, Instituto de Investigaciones Históricas.
- CHARNAY, DESIRÉ
1863 *Cités et ruines américaines: Mitla, Palenque, Izamal, Chichén Itzá, Uxmal*. Paris.
- 1887 *The Ancient Cities of the New World: Being Voyages and Explorations in Mexico and Central America from 1857-1882*. Translated by J. Goniüs and Helen S. Conant. New York.
- CHASE, ARLEN F.
1979 "Regional Development in the Tayasal-Paxcaman Zone, El Peten, Guatemala: A Preliminary Statement." *Cerámica de Cultura Maya* 11:86-119.
- CHURCH, C. and K.
1955 *Vocabulario jocalteco-castellano*. Guatemala: Instituto Lingüístico de Verano.
- CLARKSON, PERSIS B.
1978 "Classic Maya Pictorial Ceramics: A Survey of Content and Theme." In *Papers on the Economy and Architecture of the Ancient Maya*. Edited by Raymond Sidrys. *University of California at Los Angeles, Institute of Archaeology Monograph* 8:86-141.
- CLOSS, MICHAEL P.
1979 "Venus in the Maya World: Glyphs, Gods and Associated Astronomical Phenomena." In *Tercera Mesa*

- Redonda de Palenque 4:147-165. Edited by Merle Greene Robertson and Donnan Call Jeffers. Monterey, Calif.: Pre-Columbian Art Research Center.
- n.d. Paired Words in the Ritual of the Bacabs and Implications for Glyphic Studies. Unpublished MS.
- CODEX BORBONICUS
- 1974 *Codex Borbonicus*. Bibliothèque de l'Assemblée Nationale-Paris (Y 120). Edited by Karl Anton Nowotny and Jacqueline de Durand-Forest. *Codices Selecti* 44. Graz.
- CODEX DRESDEN
- 1975 *Codex Dresdensis*. Edited by Helmut Deckert. Graz.
- CODEX MADRID
- 1967 *Codex Tro-Cortesianus (Codex Madrid): Museo de América, Madrid*. Introduction and summary by Ferdinand Anders. Graz.
- CODEX NUTTALL
- 1902 *Codex Nuttall: Facsimile of an Ancient Mexican Codex Belonging to Lord Zouche of Harynworth, England, with an Introduction by Zelia Nuttall*. Peabody Museum.
- 1975 *The Codex Nuttall, a Picture Manuscript from Ancient Mexico: The Peabody Museum Facsimile Edited by Zelia Nuttall*. Introduction by Arthur G. Miller. New York.
- CODEX PARIS
- 1968 *Codex Peresianus (Codex Paris)*. Graz.
- CODEX TELLERIANO-REMENSIS
- 1899 *Codex Telleriano-Remensis: Manuscrit mexicain du cabinet de Ch.-M. Le Tellier, archeveque de Reims à la Bibliothèque National (MS. mexicain no. 385)*. Edited by E.-T. Hamy. Paris.
- COE, MICHAEL D.
- 1970 "Olmec Jaguars and Olmec Kings." In *The Cult of the Feline*: 1-18. Edited by Elizabeth P. Benson. Washington: Dumbarton Oaks.
- 1973a "The Iconology of Olmec Art." In *The Iconography of Middle American Sculpture*. New York: The Metropolitan Museum of Art.
- 1973b *The Maya Scribe and His World*. New York: The Grolier Club.
- 1974 "A Carved Wooden Box from the Classic Maya Civilization." In *Primera Mesa Redonda de Palenque, Part 2*:51-58. Edited by Merle Greene Robertson. Pebble Beach: Robert Louis Stevenson School.
- 1975a *Classic Maya Pottery at Dumbarton Oaks*. Washington: Dumbarton Oaks, Trustees for Harvard University.
- 1975b "Three Maya Figurines from Jaina Island." *Yale University Art Gallery Bulletin* 35:24-25.
- 1976 "Early Steps in the Evolution of Maya Writing." In *Origins of Religious Art and Iconography in Preclassic Mesoamerica*: 107-122. Edited by H. B. Nicholson. Los Angeles: UCLA Latin American Center.
- 1977 "Supernatural Patrons of Maya Scribes and Artists." In *Social Process in Maya Prehistory*: 327-347. Edited by Norman Hammond. New York.
- 1978 *Lords of the Underworld: Masterpieces of Classic Maya Ceramics*. The Art Museum, Princeton University. Princeton University Press.
- COE, MICHAEL D., and ELIZABETH P. BENSON
- 1966 Three Maya Relief Panels at Dumbarton Oaks. *Studies in Pre-Columbian Art and Archaeology* 2. Washington: Dumbarton Oaks.
- COE, WILLIAM R.
- 1959 *Piedras Negras Archaeology: Artifacts, Caches, and Burials*. University of Pennsylvania, The University Museum Monographs.
- 1962 "A Summary of Excavation and Research at Tikal, Guatemala: 1956-61." *American Antiquity* 27:479-507.
- 1965 "Tikal: Ten Years of Study of a Maya Ruin in the Lowlands of Guatemala." *Expedition* 8(1):5-56.
- 1967 *Tikal: A Handbook of the Ancient Maya Ruins*. Philadelphia: University of Pennsylvania, The University Museum.
- COFFMAN, ROBERT J.
- n.d. "A Commentary on the Hieroglyphic Inscriptions of Naranjo, El Peten, Guatemala." Senior thesis, University of Texas at Austin.
- COGGINS, CLEMENCY CHASE
- 1975 "Painting and Drawing Styles at Tikal: An Historical and Iconographic Reconstruction. Ph.D dissertation, Harvard University. Ann Arbor: University Microfilms International.
- COHODAS, MARVIN
- 1978 *The Great Ball Court at Chichen Itza, Yucatan, Mexico*. Ph.D dissertation, Columbia University. New York: Garland Publishing, Inc.
- COMRIE, BERNARD
- 1976 *Aspect: An Introduction to the Study of Verbal Aspect and Related Problems*. Cambridge: Cambridge University Press.
- COOK DE LEONARD, CARMEN
- 1954 "Dos extraordinarias vasijas del Museo de Villa Hermosa (Tabasco)." *Yan* 3:83-104.
- 1971 "Gordos y enanos de Jaina (Campeche, Mexico)." *Revista Española de Antropología Americana* 6:57-83.
- CÓRDOVA, JUAN DE
- 1886 *Arte del idioma zapoteco*. Morelia.
- CORSON, CHRISTOPHER
- 1973 "Iconographic Survey of Some Principal Figurine Subjects from the Mortuary Complex of Jaina, Campeche." *Contributions of the University of California Archaeological Research Facility* 18:51-75. Berkeley.
- 1976 "Maya Anthropomorphic Figurines from Jaina Island, Campeche." *Ballena Press Studies in Mesoamerican Art, Archaeology and Ethnohistory* 1. Ramona.
- CORTÉS, HERNÁN
- 1866 *Cartas y relaciones de Hernán Cortés al emperador Carlos V*. Edited by Pascual de Gayangos. Paris.
- COVARRUBIAS, MIGUEL
- 1957 *Indian Art of Mexico and Central America*. New York.
- CRAINE, EUGENE R., and REGINALD C. REINDORP
- 1979 *The Codex Perez and the Book of Chilam Balam of Maní*. Norman: University of Oklahoma Press.
- CULBERT, T. PATRICK
- 1973 "Introduction: A Prologue to Classic Maya Culture and the Problem of Its Collapse." In *The Classic Maya Collapse*: 3-19. Edited by T. Patrick Culbert. Albuquerque: University of New Mexico Press.
- DAY, CHRISTOPHER
- 1978 *Diccionario jacalteco-español*. Preliminary version. University of Rochester.
- DE LA FUENTE, BEATRIZ
- 1968 "Un relieve de Palenque en Washington." *Anales del*

- Instituto de Investigaciones Estéticas* 37:37-41. Mexico: Universidad Nacional Autónoma de México.
- ed. 1976 "Arte huasteco prehispánico." *Artes de México* 22(187).
- DE LA FUENTE, BEATRIZ and DANIEL SCHÁVELZON
1976 "Algunas noticias poco conocidas que sobre Palenque se publicaron en el siglo XIX." In *The Art, Iconography & Dynastic History of Palenque, Part 3: Proceedings of the Segunda Mesa Redonda de Palenque*: 149-153. Edited by Merle Greene Robertson. Pebble Beach: Robert Louis Stevenson School.
- DE LA MAZA R., ROBERTO
1976 "La mariposa y sus estilizaciones en las culturas teotihuacana (200-750 D.C.) y azteca (1325-1521 D.C.)." *Revista de la Sociedad Mexicana de Lepidoterología* 2(1).
- DEL RÍO, ANTONIO
1822 *Description of the Ruins of an Ancient City, Discovered near Palenque . . .* London.
- DIBBLE, CHARLES E.
1951 Códice Xolotl. *Universidad Nacional Autónoma de México, Publicaciones del Instituto de Historia*, series 1(22).
- DIESELDORFF, E. P.
1926 *Kunst und Religion der Mayavölker im alten und heutigen Mittelamerika* 1. Berlin.
1933 *Kunst und Religion der Mayavölker, 3: Die Datierung der Tempel*. Berlin
- DUNNING, NICHOLAS
n.d. An Inscribed Column from Dzehkabtun, Campeche. MS.
- DUPRONT, A.
1972 "Pélérinages." *Encyclopaedia Universalis* 12. Paris.
- DURÁN, FRAY DIEGO DE
1967 *Historia de las Indias de Nueva España e islas de la Tierra Firme*. 2 vols. Edited by Angel María Garibay K. Mexico.
1971 *Book of the Gods and Rites and the Ancient Calendar*. Translated by Fernando Horcasitas and Doris Heyden. Norman: University of Oklahoma Press. (2nd ed., 1975.)
- DU SOLIER, WILFRIDO
1939- "Estudio arquitectónico de los edificios huastecos." *Anales del Instituto Nacional de Antropología e Historia* 1:121-145. Mexico.
1943 "Conclusiones sobre el estudio arqueológico de la Huasteca." *Tercera Reunión de Mesa Redonda sobre Problemas Antropológicos de México y Centro América*:148-152. Sociedad Mexicana de Antropología.
- DÜTTING, DIETER
1972 "Hieroglyphic Miscellanea." *Zeitschrift für Ethnologie* 97(1):220-256.
1974 "Sorcery in Maya Hieroglyphic Writing." *Zeitschrift für Ethnologie* 99:2-62.
1976 "The Great Goddess in Classic Maya Religious Belief." *Zeitschrift für Ethnologie* 101:41-146.
1978a "'Bats' in the Usumacinta-Valley: Remarks on the Inscriptions of Bonampak and Neighboring Sites in Chiapas, Mexico." *Zeitschrift für Ethnologie* 103:1-56.
1978b "Sustina Gracia: An Inquiry into the Farmer's Almanacs of the Codex Dresden." *Indiana* 5:145-170.
1979a "Birth, Inauguration and Death in the Inscriptions of Palenque, Chiapas, Mexico." In *Tercera Mesa Redonda de Palenque* 4:183-214. Edited by Merle Greene Robertson and Donnan Call Jeffers. Monterey, Calif.: Pre-Columbian Art Research Center.
- 1979b "On the Hieroglyphic Inscriptions of Three Monuments from Piedras Negras, Guatemala." *Zeitschrift für Ethnologie* 104:17-63.
- 1980 "Aspects of Classic Maya Religion and World View." *Tribus* 29:106-167.
1981 "Zum Charakter der Maya-Schrift und den Schwierigkeiten ihrer Entzifferung." *Mexikon* 3(3):45-48.
- EASBY, ELIZABETH KENNEDY, and JOHN F. SCOTT
1970 *Before Cortes: Sculpture of Middle America*. New York: The Metropolitan Museum of Art.
- ECHANOVE TRUJILLO, CARLOS
1975 *Dos héroes de la arqueología maya: El Conde Walddeck y Teobert Maler*. Mérida: Universidad de Yucatán.
- ECHEAGARAY BABLOT, L.
1950 "Los recursos natural de Yucatán en relación con sus posibilidades de riego." *Ingeniería Hidráulica* 4(3):34-68. Mexico.
- EDMONSON, MUNRO S.
1965 Quiche-English Dictionary. *Tulane University, Middle American Research Institute Publication* 30.
1971 The Book of Council: The Popol Vuh of the Quiche Maya of Guatemala. *Tulane University, Middle American Research Institute Publication* 35.
1976 "The Mayan Calendar Reform of 11.16.0.0.0." *Current Anthropology* 17(4):713-717.
- EKHOLM, GORDON F.
1944 "Excavations at Tampico and Panuco in the Huasteca, Mexico." *Anthropological Papers of the American Museum of Natural History* 38(5):319-512.
1953 "Notas arqueológicas sobre el Valle de Tuxpan y áreas circunvecinas." *Revista Mexicana de Estudios Antropológicos* 13:413-421.
1970 *Ancient Mexico and Central America*. New York: American Museum of Natural History.
- EKHOLM, SUSANNA M.
1979a "The Lagartero Figurines." In *Maya Archaeology and Ethnohistory*:172-186. Edited by Norman Hammond and Gordon R. Willey. Austin: University of Texas Press.
1979b "The Significance of an Extraordinary Maya Ceremonial Refuse Deposit at Lagartero, Chiapas." In *Actes du XLII^e Congrès International de Américanistes* (1976)8:147-159. Paris.
- ENCYCLOPEDIA AMERICANA
1980 *Encyclopedia Americana*. Vol. 3. Danbury.
- FELDMAN, LAWRENCE H.
1978 "Timed Travels in Tarascan Territory: Friar Alonso Ponce in the Old Tarascan Domains 1586-1587." In *Mesoamerican Communication Routes and Cultural Contacts*. In *Papers of the New World Archaeological Foundation* 40:123-126. Edited by Thomas A. Lee and Carlos Navarrete.
- FEWKES, JESSE WALTER
1907 "Certain Antiquities of Eastern Mexico." *Smithsonian Institution, Bureau of American Ethnology Twenty-fifth Annual Report for 1903-04*:221-284.
- FLORENCIA, FRANCISCO DE
1690 *Descripción histórica y moral del yermo de San Miguel de las Cuevas*. Cádiz.
- FONCERRADA DE MOLINA, MARTA
1970 "Reflexiones sobre la decoración de un vaso maya."

- Universidad Nacional Autónoma de México, *Anales del Instituto de Investigaciones Estéticas* 39:79-86.
- 1972 "El pensamiento mítico maya en un vaso del clásico tardío." In *Religión en Mesoamérica, XIIª Mesa Redonda de la Sociedad Mexicana de Antropología*: 303-308. Mexico.
- 1976a "El enano en la plástica maya." *Universidad Nacional Autónoma de México, Anales del Instituto de Investigaciones Estéticas* 45:45-57.
- 1976b "La pintura mural de Cacaxtla, Tlaxcala. *Universidad Nacional Autónoma de México, Anales del Instituto de Investigaciones Estéticas* 46:5-20.
- 1978a "The Cacaxtla Murals: An Example of Cultural Contact?" *Ibero-Amerikanisches Archiv* n.f. 4(2):141-160.
- 1978b "Reflexiones en torno a la pintura mural de Cacaxtla." *Comunicaciones: Proyecto Puebla-Tlaxcala* 15:103-130.
- 1979a "La pintura mural de Cacaxtla." In *Actes du XLIIª Congrès International des Américanistes* (1976)7: 321-335. Paris.
- 1979b "Consideraciones sobre algunos de los signos glíficos en la pintura mural de Cacaxtla." In *Los Procesos de Cambio: XVª Mesa Redonda de Sociedad Mexicana de Antropología, Guanajuato, 1977*. Mexico.
- 1980 "Mural Painting in Cacaxtla and Teotihuacán Cosmopolitanism." In *Tercera Mesa Redonda de Palenque, Part 2* 5:183-198. Edited by Merle Greene Robertson. Austin: University of Texas Press.
- FÖRSTEMANN, ERNST W.
1880 *Die Mayahandschrift der königlichen öffentlichen Bibliothek zu Dresden*. Leipzig.
- 1886 *Erläuterungen zur Mayahandschrift der königlichen öffentlichen Bibliothek zu Dresden*. Dresden: Königliche Sammlungen für Kunst und Wissenschaft.
- 1901 "Der Mayagott des Jahresschlusses." *Globus* 80(12): 26.
- FOUGHT, JOHN
1965 "A Phonetic and Morphological Interpretation of Zimmerman's Affix 61 in the Maya Hieroglyphic Codices." *Estudios de Cultura Maya* 5:253-280.
- 1967 "Chorti (Mayan): Phonology, Morphophonemics, and Morphology." Ph.D. dissertation, Yale University. Ann Arbor: University Microfilms International.
- FOX, JAMES ALLAN
1978 "Proto-Mayan Accent, Morpheme Structure Conditions, and Velar Innovations," Ph.D. dissertation, University of Chicago.
- FOX, JAMES ALLAN, and JOHN S. JUSTESON
1984 "Polyvalence in Mayan Hieroglyphic Writing." In *Phoneticism in Mayan Hieroglyphic Writing*, edited by John S. Justeson and Lyle Campbell, pp. 17-76. Albany: Institute for Mesoamerican Studies, SUNY.
- FOX, JOHN W.
1980 "Lowland to Highland Mexicanization Processes in Southern Mesoamerica." *American Antiquity* 45(1): 43-54.
- FRAZER, SIR JAMES GEORGE
1922 *The Golden Bough*. New York.
- FREIDEL, DAVID A.
1975 "The Ix Chel Shrine and Other Temples of Talking Idols." *Harvard University, Peabody Museum Monographs* 3:107-113.
- 1979 "Culture Areas and Interaction Spheres: Contrasting Approaches to the Emergence of Civilization in the Maya Lowlands." *American Antiquity* 44(1):36-54.
- FRILLEY, JORGE.
n.d. *La India literaria*. Translated by Dr. M. Rodríguez Navas. Paris.
- FRY, ROBERT E.
1979 "The Economics of Pottery at Tikal, Guatemala: Models of Exchange for Serving Vessels." *American Antiquity* 44(3):494-512.
- FURST, JILL LESLIE
1978 *Codex Vindobonensis Mexicanus I: A Commentary*. State University of New York at Albany Institute for Mesoamerican Studies Publication 4.
- FURST, PETER T.
1968 "The Olmec Were-Jaguar Motif in the Light of Ethnographic Reality." In *Dumbarton Oaks Conference on the Olmec*:143-174. Edited by Elizabeth P. Benson. Washington: Dumbarton Oaks.
- 1976 "Fertility, Vision Quest and Auto-Sacrifice: Some Thoughts on Ritual Blood-Letting among the Maya." In *Segunda Mesa Redonda de Palenque, Part 3*:181-193. Edited by Merle Greene Robertson. Pebble Beach: Robert Louis Stevenson School.
- GADOW, HANS
1901 "Amphibia and Reptiles." In *The Cambridge Natural History* 7. Cambridge (Reprinted 1958).
- GANN, THOMAS W. F.
1914 "Report on Some Investigations in British Honduras." *University of Liverpool, Institute of Archaeology, Annals of Archaeology and Anthropology* 7(1, 2):28-42.
- 1918 *The Maya Indians of Southern Yucatan and Northern British Honduras*. *Smithsonian Institution, Bureau of American Ethnology Bulletin* 64. Washington.
- 1926 *Ancient Cities and Modern Tribes*. London.
- 1927 *Maya Cities*. London.
- GARCÍA DE LEÓN, A.
1971 *Los elementos del tzotzil colonial y moderno*. *Universidad Nacional Autónoma de México, Centro de Estudios Mayas, Cuaderno* 7. Mexico.
- GARCÍA PAYÓN, JOSÉ
1963 *Bibliografía arqueológica de Veracruz*. Jalapa: Universidad de Veracruz.
- 1974 "La Huasteca." *Historia de México* 2(21, 22):115-140. Mexico.
- 1976 "La Huasteca." In *Los Señorios y Estados Militaristas*: 243-290. Mexico: Instituto Nacional de Antropología e Historia.
- GATES, WILLIAM
1938 *A Grammar of Maya*. Baltimore: The Maya Society.
- GIFFORD, JAMES C.
1976 *Prehistoric Pottery Analysis and the Ceramics of Barton Ramie in the Belize Valley*. *Harvard University, Memoirs of the Peabody Museum of Archaeology and Ethnology* 18.
- GOLDSTEIN, MARILYN
1979 "Maya Figurines from Campeche, Mexico: Classification on the Basis of Clay Chemistry, Style, and Iconography." Ph.D. dissertation, Columbia University. Ann Arbor: University Microfilms International.
- GOMBRICH, E. H.
1969 *The Sense of Order*. The Wrightsman Lectures delivered under the auspices of the New York Institute of Fine Arts. Ithaca: Cornell University Press.
- GONZÁLEZ FERNÁNDEZ, BALTASAR
1978 *Field notes, Uxmal, Yucatán*.
- 1979 *Informe preliminar del trabajo efectuado dentro del*

- Proyecto Uxmal. Unpublished MS on file, Centro Regional del Sureste del Instituto Nacional de Antropología e Historia, Mérida, Yucatán.
- GORDON, GEORGE B., and JOHN A. MASON
1925-1943 *Examples of Maya Pottery in the Museum and Other Collections*. Philadelphia: University of Pennsylvania, The University Museum.
- GOSSEN, GARY H.
1974 *Chamulas in the World of the Sun: Time and Space in a Maya Oral Tradition*. Cambridge, Mass. Harvard University Press.
- GRAHAM, IAN
1967 *Archaeological Explorations in El Petén, Guatemala. Tulane University, Middle American Research Institute Publication 33*.
1977 "Hieroglyphic Lintels." In *Las Monjas*:267-274. By John S. Bolles. Norman: University of Oklahoma Press.
- GRAHAM, IAN and ERIC VON EUW
1975- *Corpus of Maya Hieroglyphic Inscriptions*. Cambridge, Mass.: Harvard University, Peabody Museum of Archaeology and Ethnology.
- GRAHAM, IAN
1982 *Corpus of Maya Hieroglyphic Inscriptions*, vol. 3, part 3. Cambridge, Mass.: Harvard University, Peabody Museum of Archaeology and Ethnology.
- GRANATA, JOSEPH JOHN
1980 "The Significance of Zoological Identification of Serpent Species in the Pictorial Manuscripts of Ancient Mexico." Ph.D dissertation, University of Texas at Austin.
- GRAULICH, M.
n.d. "The Metaphor of the Day in Ancient Mexican Myth and Ritual." *Current Anthropology*. (In press.)
- GREEN, DEE F., and GARETH W. LOWE
1967 *Altamira and Padre Piedra: Early Preclassic Sites in Chiapas, Mexico. Papers of the New World Archaeological Foundation 20*.
- GREENE, MERLE, ROBERT L. RANDS, and JOHN A. GRAHAM
1972 *Maya Sculpture from the Southern Lowlands, the Highlands and Pacific Piedmont, Guatemala, Mexico and Honduras*. Berkeley.
- GREENE ROBERTSON, MERLE
1972 "The Ritual Bundles of Yaxchilan." Paper presented at the Tulane University Symposia on the Art of Latin America, New Orleans.
1974 "The Quadripartite Badge – A Badge of Rulership." In *Primera Mesa Redonda de Palenque, Part 1*:77-93. Edited by Merle Greene Robertson. Pebble Beach: Robert Louis Stevenson School.
1975 "Stucco Techniques Employed by Ancient Sculptors of the Palenque Piers." In *Actas del XLII Congreso Internacional de Americanistas 1*:449-472. Mexico.
1977 "Painting Practices and Their Change through Time of the Palenque Stucco Sculpture." In *Social Process in Maya Prehistory: Studies in Honour of Sir Eric Thompson*:297- 326. Edited by Norman Hammond. London.
1979a "An Iconographic Approach to the Identity of the Figures on the Piers of the Temple of the Inscriptions, Palenque." In *Tercera Mesa Redonda de Palenque 4*:129-138. Edited by Merle Greene Robertson and Donnan Call Jeffers. Monterey, Calif.: Pre-Columbian Art Research Center.
1979b "A Sequence for Palenque Painting Techniques." In *Maya Archaeology and Ethnohistory*:149-171. Edited by Norman Hammond and Gordon R. Willey. Austin: University of Texas Press.
- GREENE ROBERTSON, MERLE, MARJORIE S. ROSENBLUM SCANDIZZO, and JOHN R. SCANDIZZO
1976 "Physical Deformities in the Ruling Lineage of Palenque and the Dynastic Implications." In *The Art, Iconography & Dynastic History of Palenque, Part 3: Proceedings of the Segunda Mesa Redonda de Palenque*:59-86. Edited by Merle Greene Robertson. Pebble Beach: Robert Louis Stevenson School.
- GROTH-KIMBALL, IRMGARD
1960 *Maya Terrakotten*. Tübingen.
- GROVE, DAVID C.
1970 "The Olmec Murals in the Cave at Oxtotitlan, Morelos, Mexico." *Studies in Pre-Columbian Art and Archaeology 6*. Washington: Dumbarton Oaks.
- GUITERAS-HOLMES, C.
1961 *Perils of the Soul*. New York.
- HABERLAND, WOLFGANG
1953 "Die regionale Verteilung von Schmuckelementen in Bereiche der klassischen Maya-Kultur." *Beiträge zur mittelamerikanischen Völkerkunde 2*. Hamburg: Museum für Völkerkunde und Vorgeschichte.
- HAMILTON, GEORGE HEARD
1975 "The Art and Architecture of Russia." *The Pelican History of Art*. Harmondsworth.
- HAMMOND, NORMAN
1976 "Holmul and Nohmul: A Comparison and Assessment of Two Maya Lowland Protoclassic Sites." Paper presented at the Forty-second International Congress of Americanists, Paris.
1977 "The Earliest Maya." *Scientific American 236*(3):116-133.
1981 "Excavations at Cuello, 1980: A Summary." *Belizean Studies 9*(3).
- HAMMOND, NORMAN, DUNCAN PRING, RICHARD WILK, SARA DONAGHEY, FRANK P. SAUL, ELIZABETH S. WING, ARLENE V. MILLER, and LAWRENCE H. FELDMAN
1979 "The Earliest Lowland Maya? Definition of the Swazey Phase." *American Antiquity 44*(1):92-110.
- HARRISON, PETER D.
1970 "The Central Acropolis, Tikal, Guatemala: A Preliminary Study of the Functions of Its Structural Components during the Late Classic Period." Ph.D. Dissertation, University of Pennsylvania. Ann Arbor: University Microfilms International.
1977 "The Rise of the *bajos* and the Fall of the Maya." In *Social Process in Maya Prehistory: Studies in Honour of Sir Eric Thompson*:468-508. Edited by Norman Hammond. London.
1978 "So the Seeds Shall Grow: Some Introductory Comments." In *Pre-Hispanic Maya Agriculture*:1-11. Edited by Peter D. Harrison and B. L. Turner II. Albuquerque: University of New Mexico Press.
- HARTUNG, HORST
1971 *Die Zeremonialzentren der Maya: Ein Beitrag zur Untersuchung der Planungsprinzipien*. Graz.
1976 "El espacio exterior en el centro ceremonial de Palenque." In *The Art, Iconography & Dynastic History of Palenque, Part 3: Proceedings of the Segunda Mesa Redonda de Palenque*:123-135. Edited by

- Merle Greene Robertson. Pebble Beach: Robert Louis Stevenson School.
- 1980 "Certain Visual Relations in the Palace at Palenque." In *Third Palenque Round Table, Part 2* 5:74-80. Austin: University of Texas Press.
- HASLER, JUAN A.
1956 *Vocabulario: Chontal de Tamulté, Tabasco*. Mexico.
- HAVILAND, WILLIAM A.
1967 "Stature at Tikal, Guatemala: Implications for Ancient Maya Demography and Social Organization." *American Antiquity* 32(3):316-325.
1977 "Dynastic Genealogies from Tikal, Guatemala: Implications for Descent and Political Organization." *American Antiquity* 42(1):61-67.
- HELFRICH, KLAUS
1973 *Menschenopfer und Totungsrituale im Kult der Maya*. Berlin.
- HERRERA Y TORDESILLAS, ANTONIO DE
1726- *Historia general de los hechos de los castellanos en*
1730 *las islas i tierra firme del mar océano*. 4 vols. Madrid.
- HOLMES, WILLIAM H.
1897 "Archaeological Studies among the Ancient Cities of Mexico, Part 2, Monuments of Chiapas, Oaxaca and the Valley of Mexico." *Field Columbian Museum Publication* 16, *Anthropological Series* 1(1). Chicago.
- HOPKINS, NICHOLAS ARTHUR
1967 "The Chuj Language." Ph.D dissertation, University of Texas at Austin.
- HORTON, WILLIAM A.
1978 "Dwarfism – An Overview." *Journal of the Kansas Medical Society* 79(2):58-61.
- HUNN, EUGENE S.
1977 *Tzeltal Folk Zoology: The Classification of Discontinuities in Nature*. New York.
- JOHNSON, M. S., and D. R. Chaffey
1974 "An Inventory of the Southern Coastal Plain Pine Forests, Belize." *Ministry of Overseas Development, Land Resource Study* 15. Surbiton.
- JONES, CHRISTOPHER
1975 "A Painted Capstone from the Maya Area." In *Studies in Ancient Meso-America* 2:83-110. Edited by John A. Graham. *Contributions of the University of California Archaeological Research Facility* 27.
1977 "Inauguration Dates of Three Late Classic Rulers of Tikal, Guatemala." *American Antiquity* 42(1):28-60.
- JORALEMON, PETER DAVID
1971 "A Study of Olmec Iconography." *Studies in Pre-Columbian Art and Archaeology* 7. Washington: Dumbarton Oaks.
1974 "Ritual Blood-Sacrifice among the Ancient Maya: Part 1." In *Primera Mesa Redonda de Palenque, Part 2*:59-75. Edited by Merle Greene Robertson. Pebble Beach: Robert Louis Stevenson School.
1976 "The Olmec Dragon: A Study in Pre-Columbian Iconography." In *Origins of Religious Art & Iconography in Preclassic Mesoamerica*:27-71. Edited by Henry B. Nicholson. Los Angeles: UCLA Latin American Center.
- JOSSERAND, J. KATHRYN, and NICHOLAS A. HOPKINS
1978 Field notes, Salto de Agua Chol.
- JOSSERAND, J. KATHRYN, LINDA SCHELE, and NICHOLAS A. HOPKINS
1979 "On the Relationship of Chol to the Mayan Hieroglyphs." *paper presented at Taller Maya 4, Palenque, Chiapas, July 4.*
- JOYCE, THOMAS ATHOL
1927 *Maya and Mexican Art*. London.
1933 "The Pottery Whistle-Figurines of Labaantun." *The Journal of the Royal Anthropological Institute of Great Britain and Ireland* 53:15-34.
- JUSTESON, JOHN S.
1978 "Maya Scribal Practice in the Classic Peirod: A Test-Case of an Explanatory Approach to the Study of Writing Systems." Ph.D dissertation, Stanford University. Ann Arbor: University Microfilms International.
- KATZ, FRIEDRICH
1966 *Situación social y económica de los aztecas durante los siglos XV y XVI*. Universidad Nacional Autónoma de México. Instituto de Investigaciones Históricas.
- KAUFMAN, TERRENCE S.
1967 Preliminary Mocho Vocabulary. *Working Paper* 5. Laboratory for Language-Behavior Research, University of California, Los Angeles.
1969 "Teco – A New Mayan Language." *International Journal of American Linguistics* 35(154).
1971 "Materiales lingüísticos para el estudio de las relaciones internas y externas de la familia de idiomas mayanos." In *Desarrollo Cultural de los Mayas*:81-136. Edited by Evon Z. Vogt and Alberto Ruz Lhuillier. Universidad Nacional Autónoma de México.
1972 "El proto-tzeltal-tzotzil: Fonología comparada y diccionario reconstruido." *Universidad Nacional Autónoma de México, Centro de Estudios Mayas, Cuaderno* 5.
- KAUFMAN, TERRENCE S., and WILLIAM NORMAN
1984 "An Outline of Proto-Cholan Phonology, Morphology and Vocabulary." In *Phoneticism in Mayan Hieroglyphic Writing*, edited by John S. Justeson and Lyle Campbell, pp. 77-166. Albany: Institute for Mesoamerican Studies, SUNY.
- KELLER, KATHRYN C.
1959 "The Phonemes of Chontal (Mayan)." *International Journal of American Linguistics* 25:44-53.
- KELLEY, DAVID HUMISTON
1962a "Fonetismo en la escritura maya." *Estudios de Cultura Maya* 2:277-317.
1962b "Glyphic Evidence for a Dynastic Sequence at Quirigua, Guatemala." *American Antiquity* 27(3):323-335.
1965 "The Birth of the Gods at Palenque." *Estudios de Cultura Maya* 5:93-134.
1968 "Maya Fire Glyphs." *Estudios de Cultura Maya* :141-157.
1975 "Planetary Data on Caracol Stela 3." In *Archaeoastronomy*:257-262. Edited by Anthony F. Aveni. Austin: University of Texas Press.
1976 *Deciphering the Maya Script*. Austin: University of Texas Press.
1977b "A Possible Maya Eclipse Record." In *Social Process in Maya Prehistory: Studies in Honour of Sir Eric Thompson*:405-408. Edited by Norman Hammond. London.
1982 "Notes on Puuc Inscriptions and History." In *The Puuc: New Perspectives. Papers presented at the Puuc Symposium, Central College, May, 1977*, edited by Lawrence Mills. Pella, Iowa: Central College.
- KELSEY, VERA, and LILLY DE JONGH OSBORN
1939 *Four Keys to Guatemala*. New York.

- KIDDER, ALFRED, II, and CARLOS SAMAYOA
CHINCHILLA
1959 *The Art of the Ancient Maya*. New York.
- KING, J. C. H.
1974 "Ethnographic Notes on the Maya of Belize, Central America." *Cambridge University Center of Latin American Studies Working Papers* 19.
- KNAUTH, LOTHAR
1961 "El juego de pelota y el rito de la decapitación." *Estudios de Cultura Maya* 1:183-198.
- KNOROZOV, YURI V.
1967 "Selected Chapters from the Writing of the Maya Indians." Translated by Sophie Coe; Tatiana Proskouriakoff, collaborating editor. *Harvard University, Russian Translation Series of the Peabody Museum of Archaeology and Ethnology* 4.
- KÖHLER, W.
1974 "Zur Jagd auf die Schemel der Berggötter." *Indiana* 2: 193-207.
- KÖTTING, BERNHARD
1950 *Peregrinatio religiosa: Wallfahrt und Pilgerwesen in antike und alte Kirche*. Regensburg/Münster.
- KRICKEBERG, WALTER
1948 "Das mittelamerikanische Ballspiel und seine religiöse Symbolik." *Paideuma* 3(3-5):118-190.
- KUBLER, GEORGE
1943 "The Cycle of Life and Death in Metropolitan Aztec Sculpture." *Gazette des Beaux-Arts* 23:257-268.
1946 "The Quechua in the Colonial World." In *Handbook of South American Indians* 2:331-410. Edited by Julian H. Steward. *Smithsonian Institution, Bureau of American Ethnology Bulletin* 143.
1954 *The Louise and Walter Arensberg Collection: Pre-Columbian Sculpture*. Philadelphia: Philadelphia Museum of Art.
1961 "On the Colonial Extinction of the Motifs in Pre-Columbian Art." In *Essays in Pre-Columbian Art and Archaeology*:14-34. By Samuel K. Lothrop et al. Cambridge, Mass.: Harvard University Press.
1962 *The Art and Architecture of Ancient America: The Mexican, Maya, and Andean Peoples*. The Pelican History of Art. Baltimore. (2nd ed., 1975.)
1969 "Studies in Classic Maya Iconography." *Memoirs of the Connecticut Academy of Arts & Sciences* 18. New Haven.
1972 "The Paired Attendants of the Temple Tablets at Palenque." In *Religión en Mesoamerica, Sociedad Mexicana de Antropología, XIIª Mesa Redonda*:317-328.
1976 "The Double-Portrait Lintels of Tikal." In *Actas del XXIIIº Congreso Internacional de Historia del Arte*: 165-175. Universidad de Granada.
1980 "Eclecticism at Cacaxtla." In *Third Palenque Round Table, 1978, Part 2* 5:163-172. Edited by Merle Greene Robertson. Austin: University of Texas Press.
- KURBUJHN, KORNELIA
1979 "Precolumbian Maya Thrones." Paper presented at the Forty-third International Congress of Americanists, Vancouver, August.
1980 "Die Sitze der Maya: Eine ikonographische Untersuchung." Ph.D. dissertation, University of Tübingen.
- n.d. Toloc-mezquel: A Maya Gesture. Unpublished MS.
- KURJACK, EDWARD B., and E. WYLLYS ANDREWS V
1976 "Early Boundary Maintenance in Northwest Yucatan, Mexico." *American Antiquity* 41(3):318-325.
- KURJACK, EDWARD B., SILVIA GARZA T., and JERRY LUCAS
1979 "Archaeological Settlement Patterns and Modern Geography in the Hill Region of Yucatan." In *The Puuc: New Perspectives*:36-45. Edited by Lawrence Mills. Pella, Iowa: Central College.
- LAS CASAS, BARTOLOMÉ DE
1967 *Apologética histórica sumaria*. 2 vols. Edited by Edmundo O'Gorman. Mexico: Universidad Nacional Autónoma de México, Instituto de Investigaciones Históricas.
- LAUGHLIN, ROBERT M.
1969 "The Tzotzil." In *Handbook of Middle American Indians* 7:152-194. General editor, Robert Wauchope. Austin: University of Texas Press.
1975 The Great Tzotzil Dictionary of San Lorenzo Zinacantan. *Smithsonian Contributions to Anthropology* 19.
- LEE, THOMAS A., JR.
1969 "The Artifacts of Chiapa de Corzo, Chiapas, Mexico." *Papers of the New World Archaeological Foundation* 26.
- LEE, THOMAS A., JR., and CARLOS NAVARRETE, eds.
1978 Mesoamerican Communication Routes and Cultural Contacts. *Papers of the New World Archaeological Foundation* 40.
- LINNÉ, SIGVALD
1943 "Humpbacks in Ancient America." *Ethnos* 8(4):161-186.
1956 *Treasures of Mexican Art*. Stockholm.
- LITVAK KING, JAIME
1978 "Central Mexico as a Part of the General Mesoamerican Communications System." *Papers of the New World Archaeological Foundation* 40:115-122.
- LIZARDI RAMOS, CÉSAR
1961 "Las Estelas 4 y 5 de Balancán-Morales, Tabasco." *Estudios de Cultura Maya* 1:107-130.
- LOMBARDO DE RUIZ, SONIA
1979 "Contribución del estudio de la forma a la iconografía de los murales de Cacaxtla." *Comunicaciones: Proyecto Puebla-Tlaxcala* 16:149-160. Puebla: Fundación Alemana para la Investigación Científica.
- LONGACRE, ROBERT
1967 "Systematic Comparison and Reconstruction." In *Handbook of Middle American Indians* 5:117-160. General editor, Robert Wauchope. Austin: University of Texas Press.
- LÓPEZ DE COGOLLUDO, DIEGO
1842-1845 *Los tres siglos de la dominación española en Yucatán o sea historia de esta provincia*. 2 vols. Campeche-Mérida.
- LÓPEZ DE MOLINA, DIANA
1977 "Los murales prehispánicos de Cacaxtla." *Boletín del Instituto Nacional de Antropología e Historia* 3(20): 2-8.
1978 "Cacaxtla: Los murales y la investigación arqueológica." *Boletín del Museo del Hombre Dominicano* 7(9):65-72.
1979a "Cacaxtla: Los murales y la investigación arqueológica." In *Actes du XLIIº Congrès International des Américanistes* (1976)8:463-466. Paris.
1979b "Cacaxtla y su relación con otras áreas mesoamericanas." In *Procesos de Cambio, XVª Mesa Redonda de la Sociedad Mexicana de Antropología* 2:7-12. Guanajuato.

- 1979c "Excavaciones en Cacaxtla: Tercera temporada." *Comunicaciones: Proyecto Puebla-Tlaxcala* 16:141-148. Puebla: Fundación Alemana para la Investigación Científica.
- LÓPEZ DE MOLINA, DIANA, and DANIEL MOLINA
1976 "Los murales de Cacaxtla." *Boletín del Instituto Nacional de Antropología e Historia, Época 2* 16:3-8. Mexico.
- LOTHRÖP, SAMUEL KIRKLAND
1952 "Metals from the Cenote of Sacrifice, Chichen Itza, Yucatan." *Harvard University, Memoirs of the Peabody Museum of Archaeology and Ethnology* 10(2).
- LOTHROP, SAMUEL KIRKLAND, WILLIAM F. FOSHAG, and JOY MAHLER
1957 *Pre-Columbian Art: The Robert Woods Bliss Collection*. London.
- LOUNSBURY, FLOYD G.
1973 "On the Derivation and Reading of the 'Ben-Ich' Prefix." In *Mesoamerican Writing Systems*:99-143. Edited by Elizabeth P. Benson. Washington: Dumbarton Oaks, Trustees for Harvard University.
- 1974a "The Inscription of the Sarcophagus Lid at Palenque." In *Primera Mesa Redonda de Palenque, Part 2*:5-19. Edited by Merle Greene Robertson. Pebble Beach: Robert Louis Stevenson School.
- 1974b "Pacal." In *Primera Mesa Redonda de Palenque, Part 2*:ii. Edited by Merle Greene Robertson. Pebble Beach: Robert Louis Stevenson School.
- 1976 "A Rationale for the Initial Date of the Temple of the Cross at Palenque." In *The Art, Iconography & Dynastic History of Palenque, Part 3: Proceedings of the Segunda Mesa Redonda de Palenque*:211-224. Edited by Merle Greene Robertson. Pebble Beach: Robert Louis Stevenson School.
- 1980 "Some Problems in the Interpretation of the Mythological Portion of the Hieroglyphic Text of the Temple of the Cross at Palenque." In *Third Palenque Round Table, 1978, Part 2*:99-115. Edited by Merle Greene Robertson. Austin: University of Texas Press.
- MACHLIN, MILT, and BOB MARX
1971 "First Visit to Three Forbidden Cities." *Argosy* 372(5): 18-29.
- MACLEOD, BARBARA
1979 "La morfología comparativa entre las lenguas yucatecas y cholanes." Paper presented at Taller Maya 4, Palenque, Chiapas, July 4.
- 1983 An Epigrapher's Annotated Index to Cholan and Yucatecan Verb Morphology. Masters thesis, University of Texas at Austin.
- MACLEOD, BARBARA, and DENNIS E. PULESTON
1978 "Pathways into Darkness: The Search for the Road to Xibalba." In *Tercera Mesa Redonda de Palenque* 4:71-77. Edited by Merle Greene Robertson and Donnan Call Jeffers. Monterey, Calif.: Pre-Columbian Art Research Center.
- MACNEISH, RICHARD S.
1947 "A Preliminary Report on Coastal Tamaulipas, Mexico." *American Antiquity* 13(1):1-15.
- 1954 "An Early Archaeological Site near Panuco, Veracruz." *Transactions of the American Philosophical Society* 44(5).
- 1967 *The Prehistory of the Tehuacan Valley* 1. General editor, Douglas S. Byers. Austin: University of Texas Press.
- 1978 *The Science of Archaeology*. Belmont, Calif.
- MAHLER, JOY
1965 "Garments and Textiles of the Maya Lowlands." In *Handbook of Middle American Indians* 3:581-593. General editor, Robert Wauchope. Austin: University of Texas Press.
- MALER, TEOBERT
1901 Researches in the Central Portion of the Usumasintla Valley. *Harvard University, Memoirs of the Peabody Museum of American Archaeology and Ethnology* 2(1). (Reprinted 1970-1976, New York.)
- 1908 Explorations of the Upper Usumasintla and Adjacent Region. *Harvard University, Memoirs of the Peabody Museum of American Archaeology and Ethnology* 4(1).
- MARCUS, JOYCE
1976 *Emblem and State in the Classic Maya Lowlands*. Washington: Dumbarton Oaks, Trustees for Harvard University.
- MARTÍNEZ HERNÁNDEZ, JUAN, ed.
1929 *Diccionario de motul, maya-español, atribuido a fray Antonio de Ciudad Real y arte de lengua maya por fray Juan Coronel*. Mérida.
- MARTÍNEZ MARÍN, C.
1972 "Santuarios y peregrinaciones en el México prehispánico." In *Religión en Mesoamérica, XIIª Mesa Redonda, Sociedad Mexicana de Antropología*:161-179.
- MATHEWS, PETER
1980 "Notes on the Dynastic Sequence of Bonampak, Part 1." In *Third Palenque Round Table, 1978, Part 2*: 60-73. Edited by Merle Greene Robertson. Austin: University of Texas Press.
- n.d. The Identification of Themes in the Sculpture of Naranjo, Dept. of Peten, Guatemala. MS.
- MATHEWS, PETER, and DAVID PENDERGAST
1979 The Altun Ha Jade Plaque: Deciphering the Inscription. *Contributions of the California Archaeological Research Facility* 41:197-214. Berkeley: University of California.
- MATHEWS, PETER, and LINDA SCHELE
1974 "Lords of Palenque – The Glyphic Evidence." In *Primera Mesa Redonda de Palenque, Part 1*:63-76. Edited by Merle Greene Robertson. Pebble Beach: Robert Louis Stevenson School.
- MAUDSLAY, ALFRED PERCIVAL
1889- *Biologia Centrali-Americana: Archaeology*. 5 vols.
1902 London.
- MAYERS, M.
1956 *Vocabulario pocomchi-español*. Guatemala: Instituto Lingüístico Verano.
- MEADE, JOAQUIN
1939 "Exploraciones en la Huasteca Potosina." In *XVIIº Congreso Internacional de Americanistas* 2:12-24. Mexico.
- 1942 *La Huasteca: Epoca antigua*. Mexico.
- 1946 *Guía de San Luis Potosí*. Mexico.
- 1948 *Arqueología de San Luis Potosí*. Mexico: Ediciones de la Sociedad de Geografía y Estadística.
- 1951a "La Huasteca Quereretana." *Monografías Huastecas* 5, 6. Mexico.
- 1951b "La Huasteca Poblana." *Academia Mexicana de la Historia, Memorias* 10(3):313-348.
- 1953 "Historia Prehispánica de la Huasteca." In *Huastecos, Totonacos y sus vecinos, Revista Mexicana de Estudios Antropológicos* 8:291-302.

- 1962 *La Huasteca Veracruzana*, Vol. 1. Veracruz.
- MEANS, PHILIP AINSWORTH
1917 History of the Spanish Conquest of Yucatan and of the Itzas. *Harvard University, Papers of the Peabody Museum of American Archaeology and Ethnology* 7.
- MEDELLÍN ZENIL, ALFONSO
1955 "Investigaciones en la región de Chicontepec, Ver." *Boletín Bibliográfico de Antropología Americana* 18: 134-137.
- MELGAREJO VIVANCO, JOSÉ LUIS
1979 "Una pintura mural en Cacaxtla, estado de Tlaxcala." *Cuadernos Antropológicos* 2:214-220. Jalapa: Instituto de Antropología, Universidad Veracruzana.
- MERRIN, EDWARD H.
1970 *Pre-Columbian Art of Mexico and Guatemala*. New York: Edward H. Merrin Gallery.
- MERWIN, RAYMOND E., and GEORGE C. VAILLANT
1932 The Ruins of Holmul, Guatemala. *Harvard University, Memoirs of the Peabody Museum of American Archaeology and Ethnology* 3(2).
- MICHELON, OSCAR, ed.
1976 Diccionario de San Francisco. *Bibliotheca Linguistica Americana* 2. Graz.
- MILES, SUZANNE W.
1957 "The Sixteenth-Century Pokom-Maya." *Transactions of the American Philosophical Society* n.s. 47(4):731-781.
- MILLER, ARTHUR G.
1973a "Archaeological Investigations of the Quintana Roo Mural Project: A Preliminary Report of the 1973 Season." In *Studies in Ancient Mesoamerica. Contributions of the University of California Archaeological Research Facility* 18:137-148. Edited by John Graham. Berkeley.
1973b *The Mural Painting of Teotihuacan*. Washington: Dumbarton Oaks, Trustees for Harvard University.
- MILLER, JEFFREY
1974 "Notes on a Stelae Pair Probably from Calakmul." In *Primera Mesa Redonda de Palenque, Part 1*:149-161. Edited by Merle Greene Robertson. Pebble Beach: Robert Louis Stevenson School.
- MILLER, MARY ELLEN
1975 *Jaina Figurines: A Study of Maya Iconography*. Princeton: The Art Museum, Princeton University.
1981 *The Murals of Bonampak, Chiapas, Mexico*. Ph.D. dissertation, Yale University.
- MOLINA, DANIEL
1978 "La investigación arqueológica en Cacaxtla, Tlaxcala." *Boletín del Museo del Hombre Dominicano* 7(9):55-64.
1979 "Consideraciones sobre la cronología de Cacaxtla." In *Los Procesos de Cambio, XIª Mesa Redonda de la Sociedad Mexicana de Antropología*.
- MORAN, FRANCISCO
1685-
1695 Arte en lengua choltili, que quiere decir lengua de milperos. MS in the Gates Collection of the Latin American Library, Tulane University.
1935 Arte y Diccionario en Lengua Choltili, a Manuscript Copied from Libro Grande of fr. Pedro Moran of about 1625. *The Maya Society, Publication* 9. Baltimore.
- MORLEY, SYLVANUS GRISWOLD
1935 Guide Book to the Ruins of Quirigua. *Carnegie Institution of Washington Supplementary Publication* 16.
- 1937-
1938 The Inscriptions of Peten. *Carnegie Institution of Washington Publication* 437. 5 vols.
1946 *The Ancient Maya*. London: Oxford.
1956 *The Ancient Maya*. 3rd ed., revised by George W. Brainerd. Stanford: Stanford University Press.
1941 The Xiu Chronicle, Part 1: The History of the Xiu. MS in the Peabody Museum, Harvard University.
1970 "The Stela Platform at Uxmal, Yucatan, Mexico." Edited and with notes by H. E. D. Pollock. *Tulane University, Middle American Research Institute Publication* 26:152-180.
- MOTOLINÍA, TORIBIO
1971 *Memoriales*. Edited by Edmundo O'Gorman. Mexico.
- MOTUL VOCABULARIO MAYA.
MS. Original in J. S. Brown Library, Providence.
- NAHM, W.
n.d. Some Phonetic Readings of Maya Glyphs. MS.
- NICHOLSON, HENRY B.
1955 "The Temalcatl of Tehuacan." *El México Antiguo* 8: 95-134.
1971 "Religion in Pre-Hispanic Central Mexico." In *Handbook of Middle American Indians* 10:395-446. General editor, Robert Wauchope. Austin: University of Texas Press.
- NORDENSKIÖLD, ERLAND
1938 "An Historical and Ethnological Survey of the Cuna Indians." *Comparative Ethnographical Studies* 10. Göteborg.
- NORMAN, V. GARTH
1973 Izapa Sculpture, Part 1: Album. *Papers of the New World Archaeological Foundation* 30.
- OBREGÓN, GONZALO
1953 *El Real Convento y Santuario de San Miguel de Chalma: Homenaje a S. Zavala*. Mexico: Colegio de México.
- OSBORNE, LILLY DE JONGH
1965 *Indian Crafts of Guatemala and El Salvador*. Norman: University of Oklahoma Press.
- PAHL, GARY
1976a "The Maya Hieroglyphic Inscriptions of Copan: A Catalog and Historical Commentary." Ph.D. dissertation, University of California at Los Angeles. Ann Arbor: University Microfilms International.
1976b "A Successor-Relationship Complex and Associated Signs." In *The Art, Iconography & Dynastic History of Palenque, Part 3: Proceedings of the Segunda Mesa Redonda de Palenque*:35-44. Edited by Merle Greene Robertson. Pebble Beach: Robert Louis Stevenson School.
- PALACIOS, ENRIQUE JUAN
1937 "Mas gemas del arte maya en Palenque." *Anales del Museo Nacional de Arqueología, Historia y Etnografía, Época* 5 2:193-225. Mexico.
- PANG, HILDA DELGADO
1976 "Similarities between Certain Early Spanish, Contemporary Spanish Folk, and Mesoamerican Indian Textile Design Motifs." In *Irene Emery Round Table on Museum Textiles, 1976 Proceedings: Ethnographic Textiles of the Western Hemisphere*:385-404. Edited by Irene Emery and Patricia Fiske. Washington: The Textile Museum.
- PARSONS, LEE A.
1969 "Bilbao, Guatemala: An Archaeological Study of the Pacific Coast Cotzumalhuapa Region." *Milwaukee*

- Public Museum Publications in Anthropology* 12.
- PASZTORY, ESTHER
 1972 "The Historical and Religious Significance of the Middle Classic Ball Game." In *Religi3n en Mesoam3rica, XII^a Mesa Redonda, Sociedad Mexicana de Antropolog3a*:441-455.
- 1974 "The Iconography of the Teotihuacan Tlaloc." *Studies in Pre-Columbian Art and Archaeology* 15. Washington: Dumbarton Oaks.
- 1976 *The Murals of Tepantitla, Teotihuacan*. New York: Garland Series, Outstanding Dissertations in the Fine Arts.
- 1978 "Artistic Traditions of the Middle Classic Period." In *Middle Classic Mesoamerica: A.D. 400-700*:108-142. Edited by Esther Pasztory. New York: Columbia University Press.
- PATCH, ROBERT
 1977 "El mercado urbano y la econom3a campesina en el siglo XVIII." *Bolet3n de la Escuela de Ciencias Antropol3gicas de la Universidad de Yucat3n* 27:52-66.
- PENDERGAST, DAVID
 1967 *Palenque: The Walker-Caddy Expedition to the Ancient Maya City, 1839-1840*. Norman: University of Oklahoma Press.
- 1969 "The Prehistory of Actun Balam, British Honduras." *Royal Ontario Museum Occasional Paper* 16.
- 1971 "Evidence of Early Teotihuacan-Lowland Maya Contact at Altun Ha." *American Antiquity* 36(4):455-460.
- 1979 *Excavations at Altun Ha, Belize, 1964-1970* 1. Toronto: Royal Ontario Museum.
- P3REZ, JUAN P3O.
 1866- *Diccionario de la lengua maya*. M3rida.
 1877
- PIÑA CHAN, ROMÁN
 1967 *Una visi3n del M3xico prehispanico* 1. Universidad Nacional Aut3noma de M3xico.
- 1968 *Jaina: La casa en el agua*. Instituto Nacional de Antropolog3a y Arqueolog3a.
- PINEDA, VICENTE
 1888 *Historia de las sublevaciones ind3genas habidas en el Estado de Chiapas*. Tuxtla Guti3rrez: Tipograf3a del Gobierno.
- PLOG, STEPHEN
 1978 "Social Interaction and Stylistic Similarity: A Reanalysis." In *Advances in Archaeological Method and Theory* 1:144-182. Edited by M. B. Schiffer. New York.
- POHL, MARY
 1981 Ritual Continuity and Transformation in Mesoamerica: Reconstructing the Ancient Maya *Cuch* Ritual. *American Antiquity* 46:513-529.
- POLLOCK, H. E. D.
 1965 "Architecture of the Maya Lowlands." In *Handbook of Middle American Indians* 2(1):378-439. General editor, Robert Wauchope. Austin: University of Texas Press.
- 1980 The Puuc: An Architectural Survey of the Hill Country of Yucatan and Northern Campeche, Mexico. *Harvard University, Memoirs of the Peabody Museum* 19.
- PRING, D. C.
 1977a "The Dating of the Teotihuacan Contact at Altun Ha: The New Evidence." *American Antiquity* 42(4):626-628.
- 1977b "The 'Protoclassic' in the Maya Lowlands." In *Social Process in Maya Prehistory: Studies in Honour of Sir Eric Thompson*:135-165. London.
- PROSKOURIAKOFF, TATIANA
 1950 A Study of Classic Maya Sculpture. *Carnegie Institution of Washington Publication* 593.
- 1960 Historical Implications of a Pattern of Dates at Piedras Negras." *American Antiquity* 25(4):454-475.
- 1961a "The Lords of the Maya Realm." *Expedition* 11(1):14-21.
- 1961b "Portraits of Women in Maya Art." In *Essays in Pre-Columbian Art and Archaeology*:81-99. By Samuel K. Lothrop et al. Cambridge, Mass.: Harvard University Press.
- 1963 "Historical Data in the Inscriptions of Yaxchilan, Part 1." *Estudios de Cultura Maya* 3:149-167.
- 1964 "Historical Data in the Inscriptions of Yaxchilan, Part 2." *Estudios de Cultura Maya* 4:177-201.
- 1968 "The Jog and Jaguar Signs in Maya Writing." *American Antiquity* 33(2):247-251.
- 1970 "On Two Inscriptions at Chichen Itza." In *Monographs and Papers in Maya Archaeology*. *Harvard University, Papers of the Peabody Museum of Archaeology and Ethnology* 61:450-467. Edited by William R. Bullard.
- 1973 "The Hand-Grasping-Fish and Associated Glyphs on Classic Maya Monuments." In *Mesoamerican Writing Systems*:165-178. Edited by Elizabeth P. Benson. Washington: Dumbarton Oaks.
- 1974 Jades from the Cenote of Sacrifice, Chichen Itza, Mexico. *Harvard University, Memoirs of the Peabody Museum of Archaeology and Ethnology* 10(1).
- PULESTON, DENNIS E.
 1971 "An Experimental Approach to the Function of Classic Maya Chultuns." *American Antiquity* 36:322-335.
- QUIRARTE, JACINTO
 1964 "La pintura mural maya." Ph.D. dissertation, Universidad Nacional Aut3noma de M3xico.
- 1972 "El juego de pelota en Mesoam3rica: Su desarrollo arquitect3nico." *Estudios de Cultura Maya* 8:83-96.
- 1973 "Izapan-Style Art: A Study of Its Form and Meaning." *Studies in Pre-Columbian Art and Archaeology* 10. Washington: Dumbarton Oaks.
- 1974 "Terrestrial/Celestial Polymorphs as Narrative Frames in the Art of Izapa and Palenque." In *Primera Mesa Redonda de Palenque, Part 1*:129-135. Edited by Merle Greene Robertson. Pebble Beach: Robert Louis Stevenson School.
- 1976 "The Relationship of Izapan-Style Art to Olmec and Maya Art: A Review." In *Origins of Religious Art and Iconography in Preclassic Mesoamerica*:73-86. Edited by Henry B. Nicholson. Los Angeles: UCLA Latin American Center.
- 1979 "The Representation of Underworld Processions in Maya Vase Painting: An Iconographic Study." In *Maya Archaeology and Ethnohistory*:116-148. Edited by Norman Hammond and Gordon R. Willey. Austin: University of Texas Press.
- RANDEL, WALTER
 1965 *Jaina Terracotta: Exhibition Catalogue*. New York.
- RANDS, ROBERT L.
 1953 "The Waterlily in Maya Art: A Complex of Alleged Asiatic Origin." *Smithsonian Institution, Bureau of*

- American Ethnology and Anthropology Papers* 34: 75-153.
- 1955 "Some Manifestations of Water in Mesoamerican Art." *Smithsonian Institution, Bureau of American Ethnology Bulletin* 157:265-393.
- 1967 "Ceramic Technology and Trade in the Palenque Region, Mexico." In *American Historical Anthropology: Essays in Honor of Leslie Spier*:137-151. Edited by Charles L. Riley and W. W. Taylor. Carbondale: Southern Illinois University.
- 1974 "A Chronological Framework for Palenque." In *Primera Mesa Redonda de Palenque, Part 1*:35-59. Edited by Merle Greene Robertson. Pebble Beach: Robert Louis Stevenson School.
- RANDS, ROBERT L., and RONALD L. BISHOP
- 1980 "Resource Procurement Zones and Patterns of Ceramic Exchange in the Palenque Region, Mexico." In *Models and Methods in Regional Exchange. Society for American Archaeology Papers* 1:19-46. Edited by R. E. Fry.
- RANDS, ROBERT L., RONALD L. BISHOP, and GARMAN HARBOTTLE
- 1979 "Thematic and Compositional Variations in Palenque-Region Incensarios." In *Tercera Mesa Redonda de Palenque* 4:19-30. Edited by Merle Greene Robertson and Donnan Call Jeffers. Monterey, Calif.: Pre-Columbian Art Research Center.
- RANDS, ROBERT L. and BARBARA C. RANDS
- 1965 "Pottery Figurines of the Maya Lowlands." In *Handbook of Middle American Indians* 2(1):535-560. General editor, Robert Wauchope. Austin: University of Texas Press.
- RATHJE, WILLIAM L.
- 1972 "Praise the Gods and Pass the Metates: A Hypothesis of the Development of Lowland Rainforest Civilizations in Mesoamerica." In *Contemporary Archaeology*:365-392. Edited by Mark P. Leone. Carbondale and Edwardsville: Southern Illinois University Press.
- RATTRAY, EVELYN C.
- n.d. "Ceramics." In *Urbanization at Teotihuacan, Mexico, 4: Ceramics and Chronology*. Austin: University of Texas Press. (In press.)
- RECINOS, ADRIAN
- 1947 *Popol Vuh*. Mexico: Fondo de Cultura Económica. (Other editions, 1951, 1973, 1979.)
- RECINOS, ADRIAN, DELIA GOETZ, and SYLVANUS G. MORLEY
- 1950 *Popol Vuh: The Sacred Book of the Ancient Quiché Maya*. Norman: University of Oklahoma Press.
- REDFIELD, ROBERT, and ALFONSO VILLA ROJAS
- 1934 Chan Kom, a Maya Village. *Carnegie Institution of Washington, Publication* 448.
- REICHEL-DOLMATOFF, GERARDO
- 1978 "The Loom of Life: Akogi Principle of Integration." *Journal of Latin American Lore* 4(1):5-27. Los Angeles.
- RELACIONES DE YUCATÁN
- 1898-1900 *Relaciones de Yucatán*. In *Colección de Documentos Inéditos Relativos al Descubrimiento, Conquista y Organización de las Antiguas Posesiones Españolas de Ultramar*, 2nd series, 11 and 13. Madrid.
- RICE, PRUDENCE M.
- 1978 "Clear Answers to Vague Questions: Some Assumptions on Provenience Studies of Pottery." In *The Ceramics of Kaminaljuyu, Guatemala*:511-542. Edited by Ronald K. Wetherington. State College: The Pennsylvania State University Press Monograph Series on Kaminaljuyu.
- ROBERTSON, DONALD
- 1959 *Mexican Manuscript Painting of the Early Colonial Period: The Metropolitan Schools*. *Yale Historical Publications, History of Art* 12. New Haven: Yale University Press.
- 1963 "The Style of the Borgia Group of Mexican Pre-Conquest Manuscripts." In *Studies in Western Art: Acts of the Twentieth International Congress of the History of Art 3: Latin American Art and the Baroque Period in Europe*:148-164. Edited by Millard Meiss et al. Princeton: Princeton University Press.
- 1970 "The Tulum Murals: The International Style of the Late Post-Classic." In *Verhandlungen des XXXVIII. Internationalen Amerikanistenkongresses* (1968)2: 77-88. Munich.
- 1972 "The Pinturas (Maps) of the Relaciones Geograficas, with a Catalog." In *Handbook of Middle American Indians* 12: *Guide to Ethnohistorical Sources*:243-278. General editor, Robert Wauchope. Austin: University of Texas Press.
- ROBICSEK, FRANCIS
- 1972 *Copan, Home of the Mayan Gods*. New York: The Museum of the American Indian, Heye Foundation.
- 1975 *A Study in Maya Art and History: The Mat Symbol*. New York: The Museum of the American Indian, Heye Foundation.
- 1978 *The Smoking Gods*. Norman: University of Oklahoma Press.
- 1979 "The Mythical Identity of God K." In *Tercera Mesa Redonda de Palenque* 4:111-128. Edited by Merle Greene Robertson and Donnan Call Jeffers. Monterey, Calif.: Pre-Columbian Art Research Center.
- RODRÍGUEZ, BLAS
- 1932 *Tampico, datos para la historia de la Huasteca*. Mexico: Editorial Cultura.
- 1939 "Una escultura huasteca." In *XXVII^o Congreso Internacional de Americanistas* 1:587-600. Mexico. *Culturas huasteca y olmeca*. Mexico.
- ROJAS, GABRIEL DE
- 1927 "Descripción de Cholula." *Revista Mexicana de Estudios Históricos* 1:158-170.
- ROTHMANS OF PALL MALL CANADA
- 1978 *Los Mayas: The Manuel Barbachano Ponce Art Collection*.
- ROYS, RALPH L.
- 1931 *The Ethno-Botany of the Maya*. *Tulane University, Middle American Research Institute Publication* 2.
- 1933 *The Book of Chilam Balam of Chumayel*. *Carnegie Institution of Washington Publication* 438.
- 1940 *Personal Names of the Maya of Yucatan*. *Carnegie Institution of Washington Publication* 523, *Contributions to American Anthropology and History* 6(31).
- 1943 *The Indian Background of Colonial Yucatan*. *Carnegie Institution of Washington Publication* 548.
- 1949 *The Prophecies for the Maya Tuns or Years in the Books of Chilam Balam of Tizimin and Mani*. *Carnegie Institution of Washington Publication* 585, *Contributions to American Anthropology and History* 51.
- 1965 *Ritual of the Bacabs*. Norman: University of Oklahoma Press.
- 1967 *Chilam Balam of Chumayel*. Norman: University of Oklahoma Press.

- RUPPERT, KARL, and JOHN H. DENISON, JR.
1943 Archaeological Reconnaissance in Campeche, Quintana Roo, and Peten. *Carnegie Institution of Washington Publication* 543.
- RUPPERT, KARL, J. ERIC S. THOMPSON, and TATIANA PROSKOURIAKOFF
1955 Bonampak, Chiapas, Mexico. *Carnegie Institution of Washington Publication* 602.
- RUZ LHUILLIER, ALBERTO
1952 "Exploraciones arqueológicas en Palenque, 1949." *Anales del Instituto Nacional de Antropología e Historia* 4(32):49-60.
1958a "Exploraciones arqueológicas en Palenque – 1955." *Anales del Instituto Nacional de Antropología e Historia* 10(39). Mexico.
1958b "El juego de pelota de Uxmal." *Miscellanea Paul Rivet, Octogenario Dictata* 1:635-667. Mexico.
1968 *Costumbres funerarias de los antiguos mayas*. Universidad Nacional Autónoma de México.
1969 La costa de Campeche en los tiempos prehispánicos. *Instituto Nacional de Antropología e Historia, Serie Investigaciones* 18. Mexico.
1970 *The Civilization of the Ancient Maya*. Mexico: Instituto Nacional de Antropología e Historia.
- SABLOFF, JEREMY A.
1973 "New Horizons in Mesoamerican Archaeology." *American Anthropologist* 75(6):1768-1774.
1975 Excavations at Seibal: The Ceramics. *Harvard University, Memoirs of the Peabody Museum of Archaeology and Ethnology* 13(2).
- SABLOFF, JEREMY A., and WILLIAM L. RATHJE
1975 A Study of Changing Pre-Columbian Commercial Systems. *Harvard University, Monographs of the Peabody Museum* 3.
- SÁENZ DE SANTA MARÍA, CARMELO
1940 *Diccionario cakchiquel-español*. Guatemala.
- SAHAGÚN, BERNARDINO DE
1950- Florentine Codex: General History of the Things of New Spain. Translated and edited by Arthur J. O. Anderson and Charles E. Dibble. *Monographs of the School of American Research* 14.
- SANDERS, FRANK J.
1977 "The 'Twin Stelae' of Seibal." *American Antiquity* 42(1): 78-86.
- SATTERTHWAITE, LINTON, JR.
1935 *Piedras Negras Preliminary Papers* 3: *Palace Structures J-2 and J-6*. Philadelphia: The University Museum, University of Pennsylvania.
1943 *Piedras Negras Archaeology: Architecture, Part 1*. Philadelphia: The University Museum, University of Pennsylvania.
1944 *Piedras Negras Archaeology: Architecture, Part 2: Temples, No. 1: Structure R-9 (Temple and Associated Construction)*. Philadelphia: The University Museum, University of Pennsylvania.
1951 "Reconnaissance in British Honduras." *The University Museum Bulletin* 16(1):21-37. Philadelphia: University of Pennsylvania Press.
1954 "Sculptured Monuments from Caracol, British Honduras." *University Museum Bulletin* 18(1, 2). Philadelphia: University of Pennsylvania Press.
- SCHAFER, EDWARD H.
1973 *The Divine Woman: Dragon Ladies and Rain Maidens in Tang Literature*. Berkeley: University of California Press.
- SCHÁVELZON, DANIEL.
n.d. "Una visión romántica de la arquitectura: Jean Frederick Maximilien, Comte de Waldeck." In *Documentos de Arquitectura Nacional y Americana* 10, Resistencia. (In press.)
- SCHELE, LINDA
1974a "The Attribution of Monumental Architecture to Specific Rulers at Palenque." Paper presented at the Forty-first International Congress of Americanists, Mexico.
1974b "Observations on the Cross Motif at Palenque." In *Primera Mesa Redonda de Palenque, Part 1*:41-61. Pebble Beach: Robert Louis Stevenson School.
1976 "Accession Iconography of Chan-Bahlum in the Group of the Cross at Palenque." In *The Art, Iconography & Dynastic History of Palenque, Part 3: Proceedings of the Segunda Mesa Redonda de Palenque*: 9-34. Edited by Merle Greene Robertson. Pebble Beach: Robert Louis Stevenson School.
1978 An Odd Kinship Expression and the Classic Bloodletting Rite. Paper presented at the 26th Annual Meeting of the American Society for Ethnohistory, Austin.
1979a "Genealogical Documentation on the Tri-Figure Panels at Palenque." In *Tercera Mesa Redonda de Palenque* 4:41-70. Edited by Merle Greene Robertson and Donnan Call Jeffers. Monterey, Calif.: Pre-Columbian Art Research Center.
1979b *Notebook of the Maya Hieroglyphic Writing Workshop at Texas*. Austin: University of Texas.
1980a "Verb Morphology of the Classic Maya Writing System." Ph.D. dissertation, University of Texas at Austin. (1982 *Maya Glyphs: The Verbs*. Austin: University of Texas Press.)
1980b "The Xibalba Shuffle." Paper presented at the conference on the Style and Iconography of Classic Maya Vases, Princeton University Department of Art and Archaeology and Art Museum, November 8.
1981a *Notebook for the Maya Hieroglyphic Writing Workshop*. Austin: Institute of Latin American Studies, University of Texas.
1981b "Sacred Site and World-View at Palenque." In *Mesoamerican Sites and World Views*:87-114. Edited by Elizabeth P. Benson. Washington: Dumbarton Oaks.
1984a "Human Sacrifice Among the Classic Maya." In *Ritual Human Sacrifice in Mesoamerica*, edited by Elizabeth H. Boone, pp. 7-48. Washington, D.C.: Dumbarton Oaks.
1984b "Some Suggested Readings of the Event and Office of Heir-Designate at Palenque." In *Phoneticism in Mayan Hieroglyphic Writing*, edited by John S. Justeson and Lyle Campbell, pp. 287-305. Albany: Institute for Mesoamerican Studies, SUNY.
n.d. A Preliminary Commentary on the Tablet of the Sun at Palenque, Chiapas. MS on file, Latin American Collection, University of Texas at Austin.
- SCHELE, LINDA, PETER MATHEWS, and FLOYD LOUNSBURY
1977 Parentage Statements in Classic Maya Inscriptions. Paper presented at the International Conference on Maya Iconography and Hieroglyphic Writing, Guatemala City.
- SCHELE, LINDA, and PETER MATHEWS.
1979 *The Bodega of Palenque, Chiapas, Mexico*. Washington: Dumbarton Oaks, Trustees for Harvard University.

- SCHELE, LINDA, and JEFFREY MILLER
1983 The Mirror, the Rabbit, and the Bundle: 'Accession' Expressions from the Classic Maya Inscriptions. *Studies in Pre-Columbian Art and Archaeology* 25. Washington: Dumbarton Oaks.
- SCHELLHAS, PAUL
1904 Representation of Deities of the Maya Manuscripts. *Harvard University, Papers of the Peabody Museum of American Archaeology and Ethnology* 4(1).
- SCHOLES, FRANCE V., and RALPH L. ROYS
1948 The Maya Chontal Indians of Acalan-Tixchel: A Contribution to the History and Ethnography of the Yucatan Peninsula. *Carnegie Institution of Washington Publication* 560.
- SCHULTZE-JENA, LEONARD
1944 Popol Vuh: Das heilige Buch der Quiché Indianer von Guatemala. *Quellenwerke zur alten Geschichte Amerikas* 2. Berlin: Ibero-amerikanischen Institut preussischen Kulturbesitz.
- SCHUMANN G., OTTO
1971 Descripción estructural del maya Itzá del Petén, Guatemala. *Universidad Nacional Autónoma de México, Centro de Estudios Mayas, Cuaderno* 6.
1973 La lengua chol, de Tila (Chiapas). *Universidad Nacional Autónoma de México, Centro de Estudios Mayas, Cuaderno* 6.
- SEDAT, GUILLERMO
1955 *Nuevo diccionario de las lenguas k'ekch' y española*. Guatemala.
- SÉJOURNÉ, LAURETTE
1966 *Arquitectura y pintura en Teotihuacan: Historia y arqueología*. Mexico.
- SELER, EDUARD
1901-1902 *Codex Fejérváry*. Translated by A. H. Keane. Berlin.
1902-1923 *Gesammelte Abhandlungen zur amerikanischen Sprach- und Altertumskunde*. 5 vols. Berlin. (Reprinted 1960-1961, Graz.)
1904 "Las antiguas colonias en la región de la Huasteca." In *Colección de Disertaciones sobre Filología y Arqueología Americana* 2:148-166. MS copy in Archivo de la Biblioteca del Museo de Antropología, Mexico.
1976 *Observations and Studies in the Ruins of Palenque*. Translated by Gisela Morgner. Pebble Beach: Robert Louis Stevenson School.
- SERNA, JACINTO DE LA
1955 *Manuel de ministros de indios para el conocimiento de sus idolatrías, y extirpación de ellas*. Mexico.
- SESTIERI, PELLEGRINO CLAUDIO
1969 *Arte maya del Guatemala*. Instituto Italo-Latino Americano, Rome.
- SHAO, PAUL
1976 *Asiatic Influences in Pre-Columbian American Art*. Ames: Iowa State University Press.
- SIMON, HERBERT A.
1980 "The Behavioural and Social Sciences." *Science* 209(4452):72-77.
- SMAILUS, ORTWIN
1975 El maya-chontal de Acalan: Análisis lingüístico de un documento de los años 1610-1612. *Universidad Nacional Autónoma de México, Centro de Estudios Mayas, Cuaderno* 9.
- SMITH, A. LEDYARD
1950 Uaxactun, Guatemala: Excavations of 1931-1937. *Carnegie Institution of Washington Publication* 558.
- SMITH, A. LEDYARD, and ALFRED V. KIDDER.
1943 Explorations in the Motagua Valley, Guatemala. *Carnegie Institution of Washington Publication* 546, *Contributions to American Anthropology and History* 8(41).
1951 Excavations at Nebaj. *Carnegie Institution of Washington Publication* 594.
- SMITH, BRADLEY
1968 *Mexico: A History in Art*. New York.
- SMITH, JOSHUA
n.d. Manual de Manuel o el tzeltal como quien dice. MS.
- SMITH, ROBERT E.
1952 Pottery from Chipoc, Alta Verapaz, Guatemala. *Carnegie Institution of Washington, Contributions to American Anthropology and History* 56.
1955 Ceramic Sequence at Uaxactun, Guatemala. *Tulane University Middle American Research Institute Publication* 20. 2 vols.
1971 The Pottery of Mayapan Including Studies of Ceramic Material from Uxmal, Kabah, and Chichen Itza. *Harvard University, Papers of the Peabody Museum of Archaeology and Ethnology* 66.
- SMITH, WATSON
1962 "Schools, Pots, and Potters." *American Anthropologist* 64(6):1165-1178.
- SOSA, JOHN R.
n.d. A Reading of the Hieroglyphic Stairway at Naranjo, Guatemala. MS.
- SOSA, JOHN R., and DORIE J. REENTS
1980 "Glyphic Evidence for Classic Maya Militarism." *Belizean Studies* 8(3):2-11. Belize City.
- SOUSTELLE, JACQUES
1958 *Mexico: Pre-Hispanic Paintings*. Introduction by Ignacio Bernal. Paris.
- SPINDEN, HERBERT J.
1913 A Study of Maya Art. *Harvard University, Memoirs of the Peabody Museum of American Archaeology and Ethnology* 6. (Reprinted 1975, New York.)
1916 "The Question of the Zodiac in America." *American Anthropologist* 18(1):53-80.
1957 *Maya Art and Civilization*. Indian Hills.
- SPRANZ, BODO
1970 *Las pirámides de Teotimehuacan, Puebla. El Proyecto México de la Fundación Alemana para la Investigación Científica*. Investigaciones Regionales e Interdisciplinarias Mexicano-Alemanas Realizadas en la Cuenca Puebla-Tlaxcala. Wiesbaden.
- STAUB, WALTER
1919 "Some Data about the Prehispanic and the Now Living Huastec Indians." *El México Antiguo* 1(3):1-65.
1926 "Le Nord-Est du Mexique et les indiens de la Huastèque." *Journal de la Société des Américanistes* n.s. 18:279-296.
- STEPHENS, JOHN L.
1841 *Incidents of Travel in Central America, Chiapas, and Yucatan*. 2 vols. New York.
1843 *Incidents of Travel in Yucatan*. 2 vols. New York.
- STERN, THEODORE
1949 The Rubber-Ball Games of the Americas. *Monographs of the American Ethnographic Society* 17.
- STOLL, OTTO
1887 *Die Sprache der Ixil-Indianer, ein Beitrag zur Ethnologie und Linguistik der Maya-Völker*. Leipzig.
- STONE, ANDREA
1977 "Jaina Style Figurines: A Study in Gesture and Pose." M.A. thesis, University of Texas at Austin.

- STRESSER-PÉAN, GUY
 1967 "Recherches françaises au Mexique et en Amérique Centrale, 1962-1968." *Journal de la Société des Américanistes* 46(2):583-610.
- 1971 "Ancient Sources on the Huasteca." In *Handbook of Middle American Indians* 2:582-602. General editor, Robert Wauchope. Austin: University of Texas Press.
- STROSS, BRIAN
 1978 "Tzeltal Tales of Demons and Monsters." *University of Missouri, Columbia, Museum Brief* 24.
- STUART, GEORGE E., and GENE S. STUART
 1977 *The Mysterious Maya*. Washington: National Geographic Society.
- SUMPTION, JONATHAN
 1975 *Pilgrimage: An Image of Mediaeval Religion*. Ottawa.
- TAACK, GEORGE H.
 1976 "Accession Glyphs on Maya Monuments: A Linguistic Approach." *Anthropological Linguistics* 18(1):29-52.
- 1977 "Maya Script and Maya Language: New Data with Regard to the Phoneme /H'/. " *Anthropological Linguistics* 19(6):280-302.
- TAUBE, KARL
 1980 "The Deer and Vulture in Classic Maya Religion." Senior honors thesis, Department of Anthropology, University of California at Berkeley.
- TAYLOR, DICEY
 1979 "The Cauac Monster." In *Tercera Mesa Redonda de Palenque* 4:79-89. Edited by Merle Greene Robertson and Donnan Call Jeffers. Monterey, Calif.: Pre-Columbian Art Research Center.
- TEDLOCK, B. H.
 1978 *Quiché Maya Divination: A Theory of Practice*. Ph.D. dissertation, State University of New York at Albany. Ann Arbor: University Microfilms International.
- THOMPSON, EDWARD H.
 1888 "Extracts from Letters on Explorations in Yucatan." Paper presented at the semi-annual meeting of the American Antiquarian Society.
- 1897 *The Chultunes of Labna, Yucatan*. Harvard University, *Memoirs of the Peabody Museum of American Archaeology and Ethnology* 1(3).
- 1898 "Ruins of Xkichmook, Yucatan." *Chicago Natural History Museum Anthropological Series* 2:209-229.
- THOMPSON, J. ERIC S.
 1930 Ethnology of the Mayas of Southern and Central British Honduras. *Field Museum of Natural History, Publication* 274, *Anthropological Series* 17(2).
- 1939a Excavations at San Jose, British Honduras. *Carnegie Institution of Washington Publication* 506.
- 1939b "The Moon Goddess in Middle America with Notes on Related Deities." *Carnegie Institution of Washington, Contributions to American Anthropology and History* 5(29): 121-173.
- 1946 Tattooing and Scarification among the Maya. *Carnegie Institution of Washington, Notes on Middle American Archaeology and Ethnology* 3(63).
- 1950 Maya Hieroglyphic Writing: Introduction. *Carnegie Institution of Washington Publication* 589. (2nd and 3rd editions, 1960, 1971, Norman.)
- 1962 *A Catalog of Maya Hieroglyphs*. Norman: University of Oklahoma Press.
- 1970 *Maya History and Religion*. Norman: University of Oklahoma Press.
- 1971 *Preliminary Decipherments of Maya Glyphs* 6. Safron Walden.
- 1972 *A Commentary on the Dresden Codex*. Philadelphia: American Philosophical Society.
- 1973a "Maya Rulers of the Classic Period and the Divine Right of Kings." In *The Iconography of Middle American Sculpture*: 52-71. New York: The Metropolitan Museum of Art.
- 1973b "The Painted Capstone at Sacnité, Yucatan, and Two Others at Uxmal." *Indiana* 1:59-64.
- 1977 "Hieroglyphic Texts at Las Monjas and Their Bearing on Building Activities." In *Las Monjas, Major Pre-Mexican Architectural Complex at Chichen Itza*:262-267. By John Bolles. Norman: University of Oklahoma Press.
- TIETZE-CONRAT, ERIKA
 1957 *Dwarfs and Jesters in Art*. London.
- TORQUEMADA, F. JUAN DE
 1723 *Los veintiún libros rituales y monarchia indiana*. 3 vols. Madrid.
- TOSCANO, SALVADOR
 1944 *Arte precolombino de México y de la América Central*. Universidad Nacional Autónoma de México, Instituto de Investigaciones Estéticas.
- TOTTEN, GEORGE OAKLEY
 1926 *Maya Architecture*. Washington.
- TOZZER, ALFRED M.
 1913 A Preliminary Study of the Prehistoric Ruins of Nakum, Guatemala: A Report on the Peabody Museum Expedition 1909-1910. *Harvard University, Memoirs of the Peabody Museum of American Archaeology and Ethnology* 5(3).
- 1921 A Maya Grammar. *Harvard University, Papers of the Peabody Museum of American Archaeology and Ethnology* 9.
- 1941 Landa's Relación de las Cosas de Yucatan: A Translation. *Harvard University, Papers of the Peabody Museum of Archaeology and Ethnology* 18.
- 1957 Chichen Itza and Its Cenote of Sacrifice. *Harvard University, Memoirs of the Peabody Museum of Archaeology and Ethnology* 11 and 12.
- TOZZER, ALFRED M. and GLOVER M. ALLEN
 1910 Animal Figures in the Maya Codices. *Harvard University, Papers of the Peabody Museum of American Archaeology and Ethnology* 4(3).
- TRIK, AUBREY S.
 1963 "The Splendid Tomb of Temple I at Tikal, Guatemala." *Expedition* 6(1):2-18.
- TURNER, VICTOR, and EDITH TURNER
 1978 *Image and Pilgrimage in Christian Culture*. New York.
- TUROK, MARTA
 1974 "Symbolic Analysis of Contemporary Maya Textiles: The Ceremonial Huipil of Magdalenas, Chiapas, Mexico." Plan of study thesis, Tufts University, Tufts.
- ULRICH, MATEO, and ROSEMARY DE ULRICH
 1976 *Diccionario bilingüe: Maya mopán y español y maya mopán*. Guatemala: Instituto Lingüístico de Verano.
- VELAZQUEZ, PRIMO F.
 1946 *Historia de San Luis Potosí* 1. Mexico: Sociedad Mexicana de Geografía y Estadística.
- VILLACORTA C., J. ANTONIO, and CARLOS A. VILLACORTA
 1927 *Arqueología Guatemala. XI Pokoma, Kak-Yu,*

- Chama, Chijear, etc.* Guatemala: Tipografía Nacional.
- 1930 *Códices maya.* Guatemala. (Reprinted 1976, Guatemala.)
- VILLAGRA CALETI, AGUSTÍN
- 1947 "Las pinturas de Bonampak." *Cuadernos Americanos* 24(4):151-168.
- 1949 Bonampak, la ciudad de los muros pintados. *Anales del Instituto Nacional de Antropología e Historia* 3 (supplement).
- VIOLLET-LE-DUC, EUGÈNE EMMANUEL
- 1875 *Histoire de l'habitation humaine depuis les temps préhistoriques jusqu'à nos jours.* Paris.
- VOGT, EVON Z.
- 1976 *Tortillas for the Gods: A Symbolic Analysis of Zinacanteco Rituals.* Cambridge, Mass.: Harvard University Press.
- VOORHIES, BARBARA
- 1976 The Chantuto People: An Archaic Period Society in the Chiapas Littoral, Mexico. *Papers of the New World Archaeological Foundation* 41.
- WEAVER, MURIEL PORTER
- 1972 *The Aztecs, Maya, and Their Predecessors: Archaeology of Mesoamerica.* New York.
- WEBSTER, DAVID L.
- 1977 "Warfare and the Evolution of Maya Civilization." In *The Origins of Maya Civilization*:335-372. Edited by R. E. W. Adams. Albuquerque: University of New Mexico Press.
- WEST, ROBERT C.
- 1964 "The Natural Regions of Middle America." In *Handbook of Middle American Indians* 1:363-383. General editor, Robert Wauchope. Austin: University of Texas Press.
- WHITTAKER, ARABELLE, and VIOLA WARKENTIN
- 1965 *Chol Tales of the Supernatural.* Summer Institute of Linguistics. Norman: University of Oklahoma.
- WILKERSON, S. JEFFREY K.
- 1972 "Ethnogenesis of the Huastecs and Totonacs: Early Cultures of North-Central Veracruz at Santa Luisa, Mexico." Ann Arbor: University Microfilms.
- 1974 "The Late Preceramic Period in Veracruz." Paper presented at the Forty-first International Congress of Americanists, Mexico.
- 1975 "Pre-Agricultural Village Life: The Late Preceramic Period in Veracruz." *Contributions of the University of California Archaeological Research Facility* 27: 89-102. Berkeley.
- 1978 *Report to the National Geographic Society and the Instituto Nacional de Antropología e Historia on the 1978 Season of the Cultural Ecology Project in Mexico.* Gainesville: Florida State University.
- 1981 "The Northern Olmec and Pre-Olmec Frontier on the Gulf Coast." In *The Olmec and Their Neighbors: Essays in Memory of Matthew W. Stirling*: 181-194. Edited by Elizabeth P. Benson. Washington: Dumbarton Oaks Research Library and Collections.
- WILLARD, T. A.
- 1926 *The City of the Sacred Well.* London.
- WILLEY, GORDON R.
- 1966 *An Introduction to American Archaeology* 1: *North and Middle America.* Englewood Cliffs.
- 1972 The Artifacts of Altar de Sacrificios. *Harvard University, Papers of the Peabody Museum of Archaeology and Ethnology* 64(1).
- 1974 "The Classic Maya Hiatus: A 'Rehearsal' for the Collapse?" In *Mesoamerican Archaeology: New Approaches*:417-430. Edited by Norman Hammond. Austin: University of Texas Press.
- 1975 Excavations at Seibal. *Harvard University, Memoirs of the Peabody Museum of Archaeology and Ethnology* 13.
- 1976 "Mesoamerican Civilization and the Idea of Transcendence." *Antiquity* 50:205-215.
- 1977 "The Rise of Maya Civilization: A Summary View." In *The Origins of Maya Civilization*:383-423. Edited by Richard E. W. Adams. Albuquerque: University of New Mexico Press.
- WILLEY, GORDON P., and JEREMY A. SABLOFF
- 1958 *Method and Theory in American Archaeology.* Chicago: University of Chicago Press.
- WILLEY, GORDON P. and JEREMY A. SABLOFF
- 1974 *A History of American Archaeology.* San Francisco. (2nd ed., 1980).
- WINNING, HASSO VON
- 1968 *Pre-Columbian Art of Mexico and Central America.* New York.
- WIRSING, PAUL
- 1930 Q'uec Chi. Kekchi-German vocabulary in six books. Typescript copy in Peabody Museum Library, Harvard University.
- WIDSOM, CHARLES
- n.d. Chorti-English Dictionary. MS.
- WOODBURY, RICHARD B., and AUBREY S. TRIK
- 1953 *The Ruins of Zaculeu, Guatemala.* Richmond.
- WUTHENAU, ALEXANDER VON
- 1965 *The Art of Terracotta Pottery in Pre-Columbian Central and South America.* New York.
- ZANTWIJK, RUDOLF VAN
- 1970 "Las organizaciones social-económicas y religiosas de los mercaderes gremiales aztecas." *Boletín de Estudios Latinoamericanos* 10:1-20.
- ZIMMERMANN, G.
- 1956 Die Hieroglyphen der Maya-Handschriften. *Universität Hamburg, Abhandlung aus dem Gebiet der Auslandskunde, Band 62.* Series B, Vol. 34.
- n.d.
- ZORITA, ALONSO DE
- 1963 *Life and Labor in Ancient Mexico: The Brief and Summary Relation of the Lords of New Spain.* Translated by Benjamin Keen. New Brunswick: Rutgers University Press.
- ZUÑIGA, FRAY DIEGO DE
- n.d. Diccionario Pocomchi-Castellano y Castellano-Pocomchi de San Cristobal Cahcoh. MS, ca. 1608, in Berendt Linguistic Collection, University of Pennsylvania. Photographic copy in Peabody Museum Library, Harvard University.

Fourth Palenque Round Table, 1980

**General Editor
Volume Editor**

**Merle Greene Robertson
Elizabeth P. Benson**

The Pre-Columbian Art Research Institute
San Francisco

Copyright 1985 by the Pre-Columbian Art Research Institute.
All rights reserved. No part of this publication may be reproduced in any form or by any means without written permission of the copyright owner.

International Standard Book Number 9-934051-03-8
Library of Congress Catalog Card Number 85-61556

Lithographed and printed by Herald Printers Inc., Monterey, California.

Cover illustration:

LADY BEASTIE

Birth: 12.19.13.4.0 8 Ahau 18 Zec

Accession to the throne of Palenque: 2.1.0.14.2 9 Ik 0 Yax

Drawings courtesy of Merle Greene Robertson